



Project information

Schinkeldijkje

Schinkeldijkje 16L
Aalsmeer

To let

Warehouse- / office unit located on Businesspark Schinkeldijkje in Aalsmeer

Schinkeldijkje 16L, Aalsmeer

Project description

Modern warehouse- /office unit of approx. 820 sq m. Located in Businesspark Schinkeldijkje in Aalsmeer. The building is equipped with an overhead door, a smooth finished concrete floor and air conditioning in the office space. The site is equipped with central camera surveillance. The property is located a short distance from the Flora Holland Flower Auction and the Green Park Aalsmeer business park, which is in full development.

Location

The object is easily accessible from the exit Rijksweg A9 Aalsmeer or Amstelveen via the Beneluxbaan/Van der Hooplaan and the provincial road N231. Bus line 171 towards Amsterdam Bijlmer Arena and bus line 199 towards Schiphol Airport both have a bus stop within walking distance of the property. The metro or tram 51 in the direction of Amsterdam Central Station is located in Stadshart Amstelveen. Schiphol Airport, Flora Holland Flower Auction and business park 'Green Park' can be reached in about 10 minutes by car.

Surface area

The total surface area is approx. 820 sq m, divided as follows:

ground floor : approx. 620 sq m warehouse;
ground floor : approx. 100 sq m office space;
1st floor : approx. 100 sq m office space.

Parking

Parking spaces are available on private ground.

State of delivery

The building features include:

- electrically operated overhead door;
- heating by means of gas heater;
- smooth finished concrete floor;
- clear height approx. 8 m;
- sky light;
- floor load approx. 1,500 kg/sq m.

The office units features include:

- air conditioning;
- turn/tilt windows that can be opened;
- suspended ceilings with built-in LED light fixtures;
- modern sanitary facilities;
- pantry (kitchen/canteen area);
- heating by means of radiators;
- central heating system.

Rental price

The rental price for the office is € 72,000 per sq m per year, excluding VAT and service charges.

Lessor and Lessee explicitly declare that in determining the rent, the rent level is based on the starting point that Lessee will permanently utilise a minimum percentage as determined by law (or at a later stage to be determined) of the leased space for purposes giving right to VAT deductions, so that taxed rent may be opted for.

Service charges

The tenant has direct connections for the supply of gas and electricity.

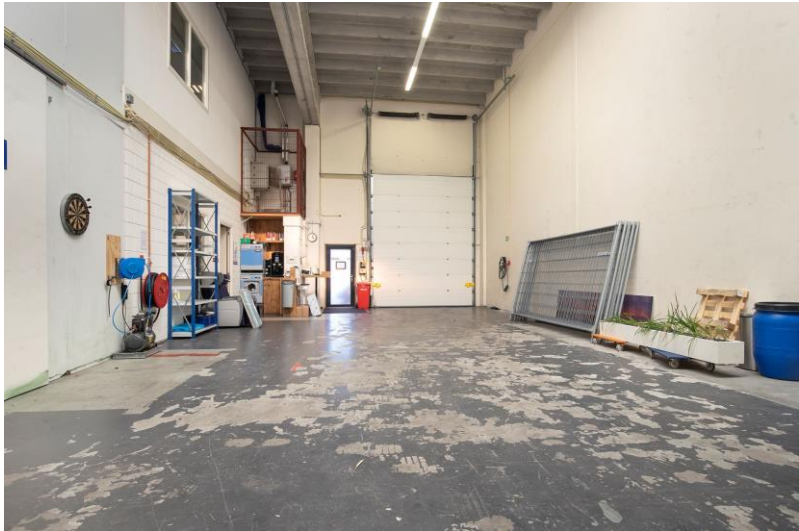
The service charges are € 125 per sq m per year excluding VAT based on at advance payment with a yearly settlement. This amount includes:

- maintenance of the central heating system;
- maintenance overhead door;
- maintenance of the outside area;
- glass cleaning outside;
- CCTV outside area.

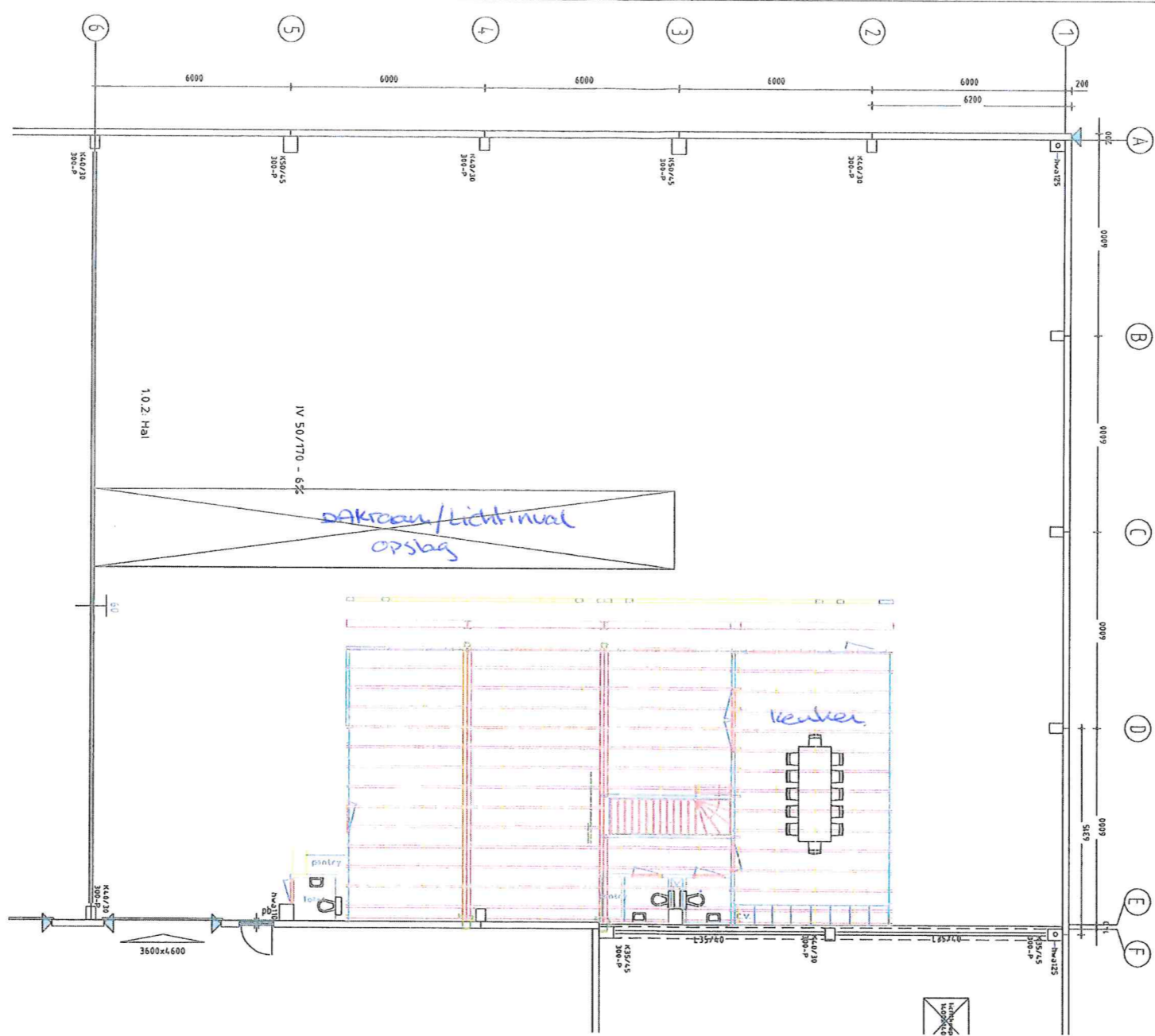
Acceptance

By mutual agreement.

Although BT Makelaars takes due care in compiling all information provided , the accuracy of the content cannot be guaranteed and no rights or obligations can be derived from the information provided







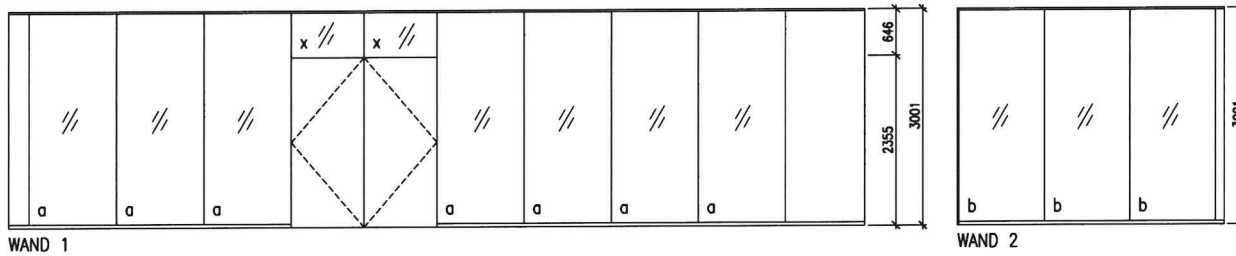
Alles in een

Getekend: JvdD	Datum : 14-10-09
Schaal : 1:125	Gew. :
Blad : 1	Gew. :
Aantal : 1	Gew. :
Kantoor L. Vandenberg 16 J	
Schinkeldijk, je 16-18 Aalsmeer	

NVOB
Deer bouw jr later nee
A3

Aannemersbedrijf
van der Drift Bouw v.o.f.

<ul style="list-style-type: none"> Antbouw Stuwbouw Verbouw Lichtbouw 	Spantlijn 61 1431 HK Aalsmeer Tel. 06-51378356 Tel. 0297-508971 Fax 0297-560027
---	---



Algemeen

Alu: RAL 7016
 St.Omega+klieklijst
 Vinyl: Durafort D-2177

Deurelementen

AL/AR KOZIJN 986x2355
 Deur: 930x2315 stomp
 Kleur: RAL 7016
 Slot: Nemeff 649/4 cil.
 Beslag: Hoppe E150z / E42K
 Paumelles: 4x Alu

Glaselementen Enkel

a Volglas 1186x2930 Glas: 1x 6mm Blank Gelaagd
 b Volglas 1165x2930 Glas: 1x 6mm Blank Gelaagd
 x Bovenlicht 986x621 Glas: 1x 4mm Blank Float

H=3001+

Maten in werk te controleren !

Postbus 224
 7120 AC Aalten
 Fax: 0543-476655
 Tel.: 0543-475115
 E-mail: info@technowand.nl
 Website: www.technowand.nl

Werk : Glendale Group BV

Adres : Schinkeldijkje 16L

Plaats : Aalsmeer

Omschrijving : Systeemwanden

TechnoWand

Form.: **A2**

Deze tekening blijft ons eigendom en mag zonder schriftelijke toestemming niet worden gekopieerd, noch ter inzage worden gegeven, noch ten behoeve van derden worden gebruikt.

Ordernr.: **09.02405**

Bladnr.: **001**

Gew.:

Gew.:

Gew.:

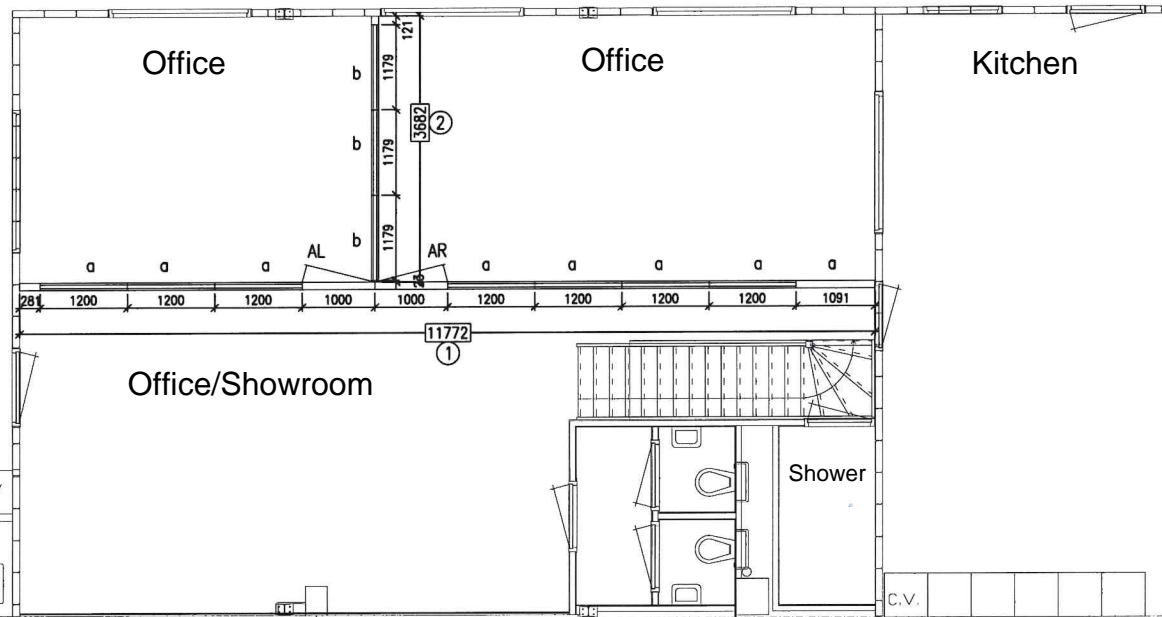
Datum: **09-12-09**

Get.: **AB**

Schaal: **1:50**



TechnoWand

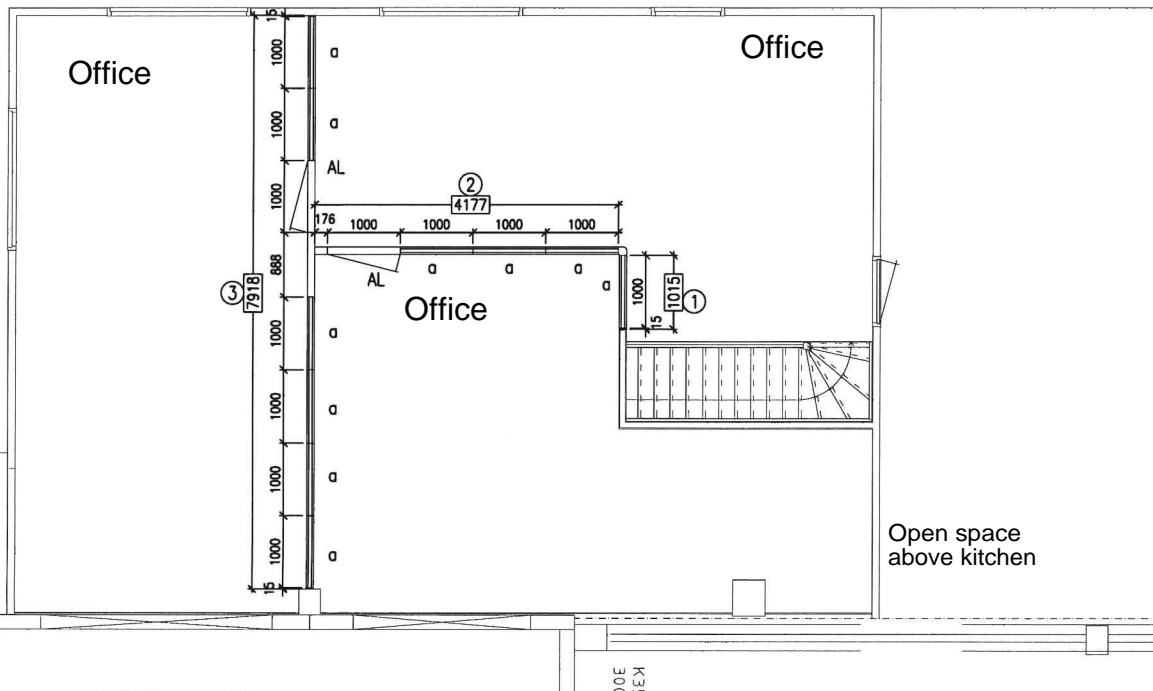
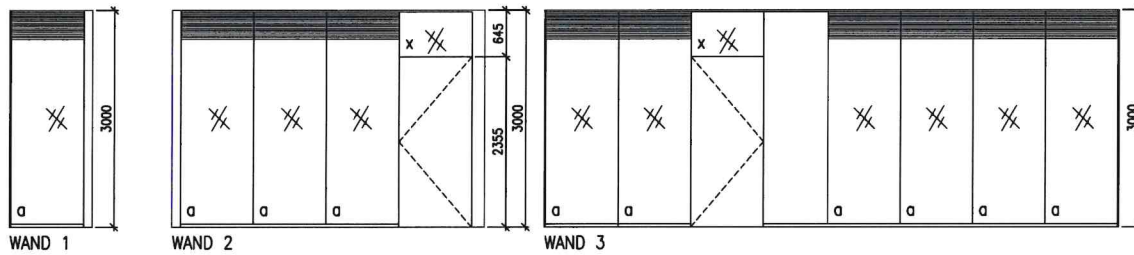


Begane grond

K35/4.5
 300-P

L35/40

K40/30
 300-P



Algemeen

Alu: RAL 7016
 St.Omega+kliklijst
 Vinyl: Durafort D-2077

Deurelementen

AL KOZIJN 986x2355
 Deur: 930x2315 stomp
 Kleur: Reinwit
 Slot: Nemeff 649/4 Cil.
 Beslag: Hoppe E150z / E42K
 Paumelles: 4x Alu

Glaselementen

a Volglas 986x2929 Glas: 2x 4mm Blank Gehard met Jaloezie
 x Volglas 874x620 Glas: 2x 4mm Blank Float

H=3000+

Maten in werk te controleren !

<small>Postbus 224 7120 AE Aalten Fax: 0543-478655 Tel. 0543-475115 E-mail: info@technowand.nl Website: www.technowand.nl</small>	Werk : Glendale Group BV	Ordernr.: 09.02405
	Adres : Schinkeldijkje 16L	Bladnr.: 001
Plaats : Aalsmeer	Gew.:	Gew.:
Omschrijving : Systeemwanden 1 verd.	Gew.:	Gew.:
	Form.: A2	Datum: 09-12-09
	<small>Deze tekening blijft ons eigendom en mag zonder schriftelijke toestemming niet worden gekopieerd, noch ter inzage worden gegeven, noch ten behoeve van derden worden gebruikt.</small>	
	Schaal: 1:50	