



Project information

Schipholweg

Schipholweg 321
Badhoevedorp

To let

Warehouse-/ office space situated at business park "De Schuilhoeve"

Schipholweg 321, Badhoevedorp

Project description

Logistic space consisting of approx. 1,405 sq m warehouse space combined with approx. 999 sq m office space. The warehouse has a clear height of approx. 7.00 m, a smoothly finished concrete floor and an electrically operated overhead door. The office space on the ground floor has a modern and industrial look and is used as a meeting space with various office spaces, a lounge area and a kitchen. The office space on the first floor is provided with a smoothly finished concrete floor, an industrial ceiling and a pantry.

Location

The object is situated at business park "De Schuilhoeve" and is easily accessible via the A9 (Amsterdam - Alkmaar), the A4 (Amsterdam - The Hague - Rotterdam) and the A5 (Hoofddorp - Haarlem). Public transport is provided by Connexxion; bus lines 192, 194 and 195 have stops at the edge of the business park and provide a fast, direct connection to Schiphol and Hoofddorp NS railway stations. Schiphol Airport is only 10 car-minutes away.

Surface area

The total surface area is approx. 2,404 sq m, divided as follows:

Warehouse space : approx. 1,405 sq m.
Office space : approx. 999 sq m.

Parking

There are 30 parking places available situated at the joint outside area.

State of delivery

The warehouse space features include:

- heating by means of gas heaters;
- clear height approx. 7 m;
- floor load approx. 2,500 kg/sq m;
- electrically operated overhead door;
- smoothly finished concrete floor.

The office space on the ground floor features include:

- suspended ceilings with built-in lighting fixtures (partly);
- industrial ceiling (partly);
- various office spaces;
- sanitary facilities;
- kitchen;
- windows that open;
- heating by means of radiators;
- smoothly finished concrete floor.

The office space on the first floor features include:

- industrial ceiling with LED-lighting;
- sanitary facilities;
- kitchen;
- windows that open;
- heating by means of radiators;
- smoothly finished concrete floor.

The unit has energy label E.

Rental price

The rental price is € 225,000 per year, excluding VAT and services charges.

Lessor and Lessee explicitly declare that at the determination of the rental price, the starting point is that the Lessee will permanently use the leased space for the by law determined (or at a later stage to be determined) minimum percentage for purposes giving entitlement to VAT deduction.

Service charges

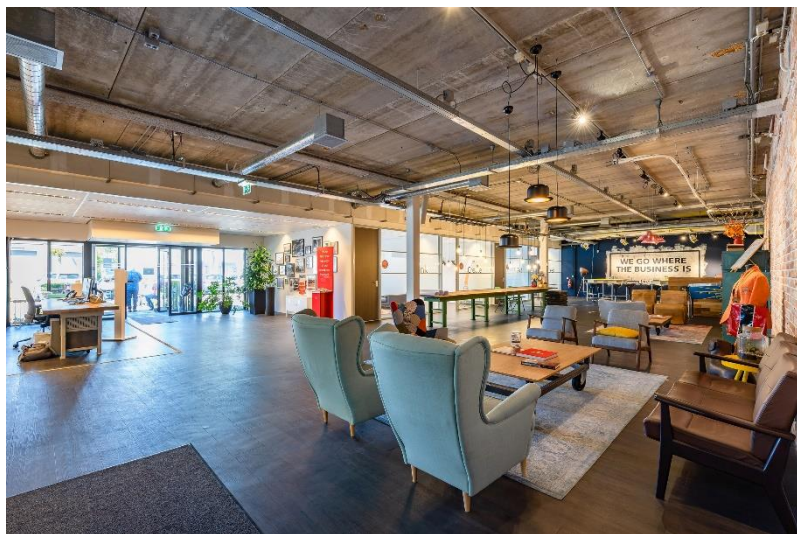
Lessee has its own connections for the supply of water, gas and electricity. The other service charges are € 15 per sq m per year, excluding VAT.

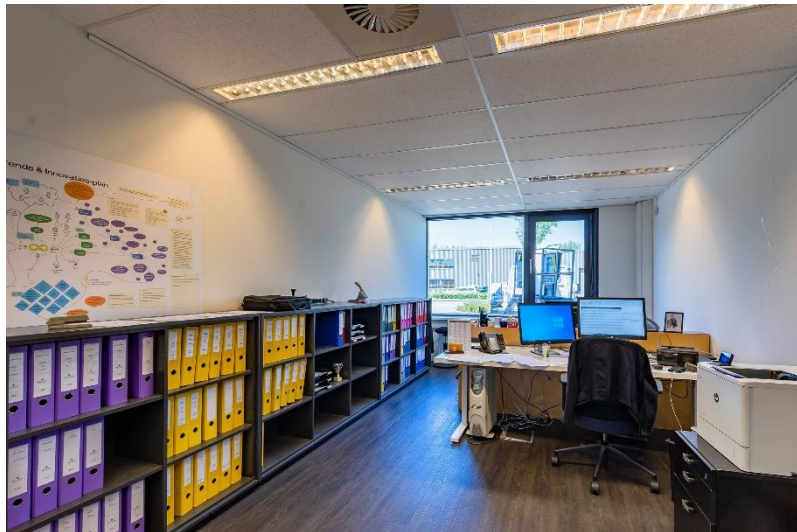
Acceptance

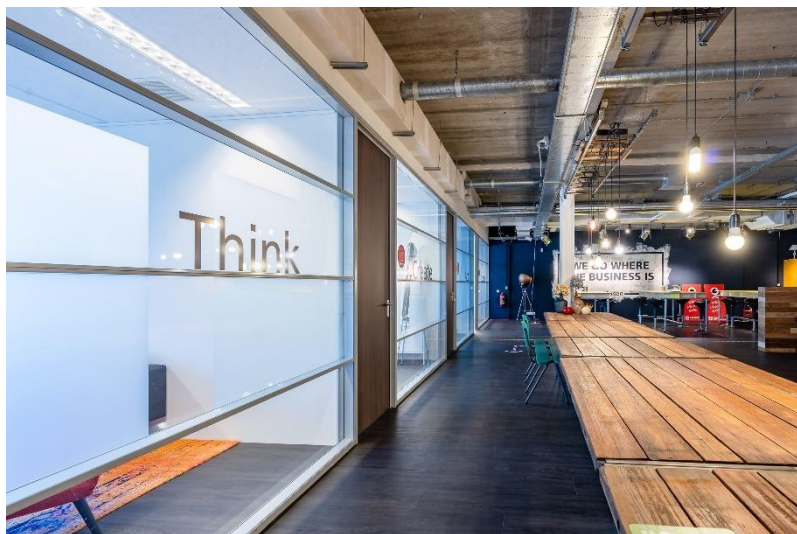
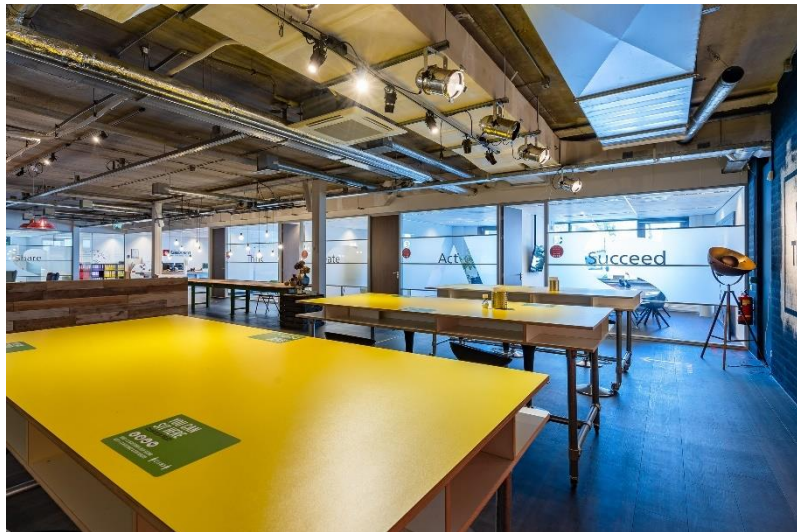
By mutual agreement.

Although BT Makelaars takes due care in compiling all information provided, the accuracy of the content cannot be guaranteed and no rights or obligations can be derived from the information provided.

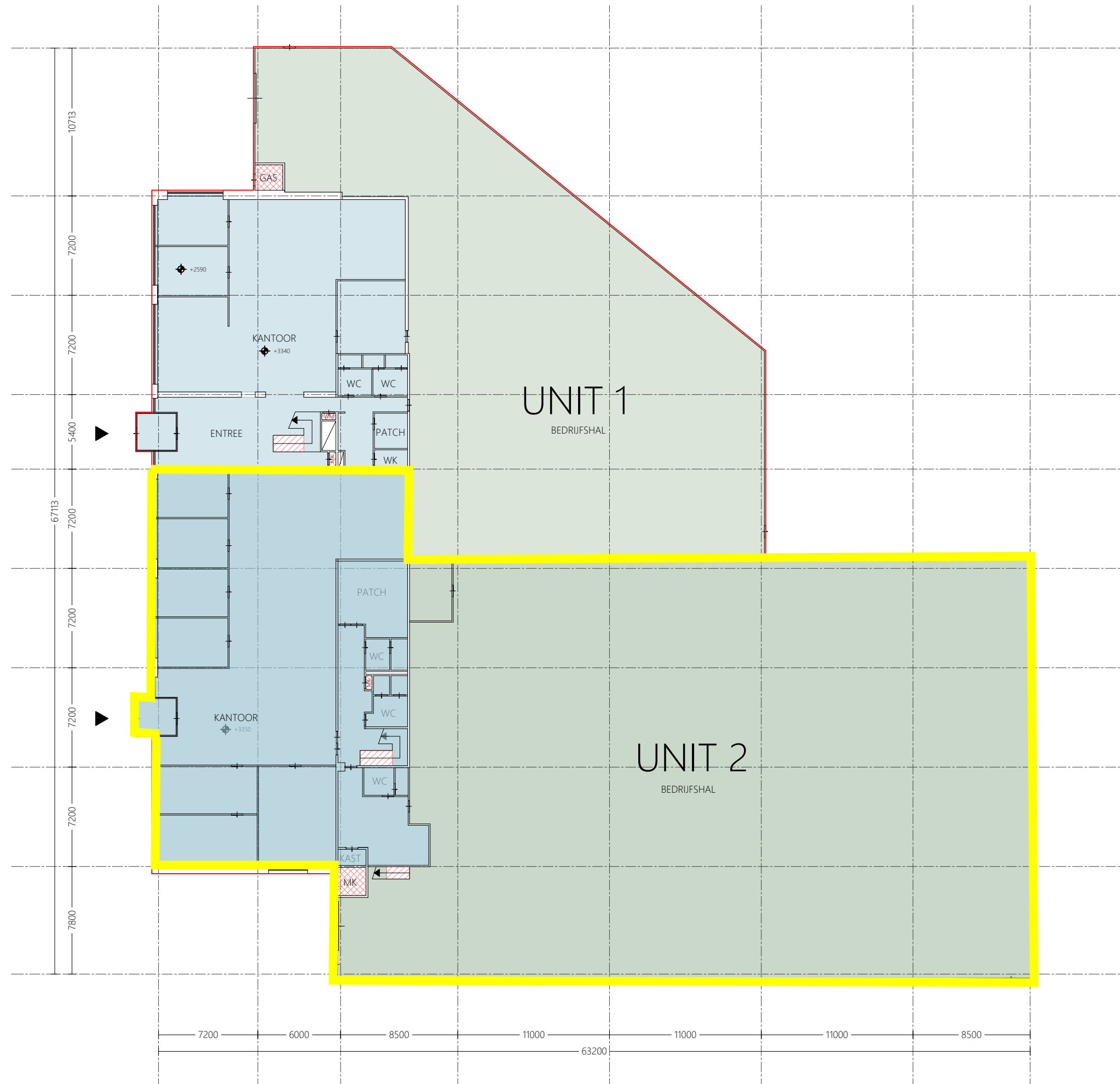












BOUWLAAG 1
BEGANE GROND

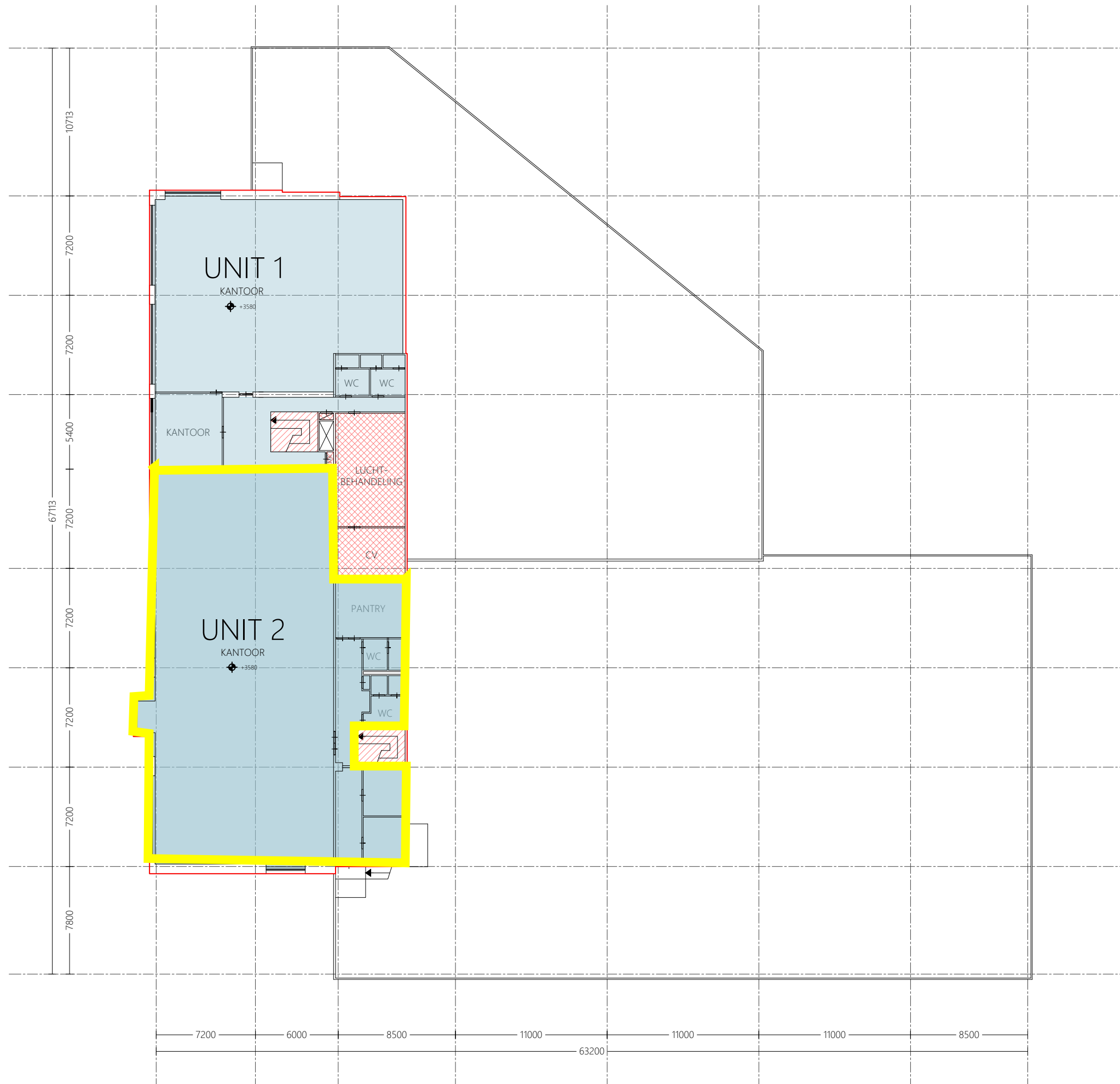
- renverooi
- bestaande indeling
 - meetlijn bruto vloeroppervlakte
 - ⊕ gemeten plafond hoogte
 - ▭ vides > 4m²
 - ▨ verticaal verkeer
 - ▩ installatieruimte
 - ▤ stahoogte lager dan 1,5m
 - verhuurbaar oppervlak kantoor
 - verhuurbaar oppervlak bedrijfshal

METAVAST

Bethaniëndwarsstraat 6R - 1012 CB Amsterdam
 info@metavast.nl - 020 222 82 60 - www.metavast.nl

object : Schipholweg 321, Badhoevendorp
 datum get. : 29-11-2019
 schaal : 1:300 / A3

bouwlaag
1



BOUWLAAG 2
1E VERDIEPING

- renvooi
- bestaande indeling
 - meetlijn bruto vloeroppervlakte
 - ◆ gemeten plafond hoogte
 - ▭ vides > 4m²
 - ▨ verticaal verkeer
 - ▩ installatieruimte
 - ▧ stahoogte lager dan 1,5m
 - verhuurbaar oppervlak kantoor
 - verhuurbaar oppervlak bedrijfshal


METAVAST

Bethaniëndwarsstraat 6R - 1012 CB Amsterdam
info@metavast.nl - 020 222 82 60 - www.metavast.nl

object : Schipholweg 321, Badhoevendorp bouwlaag

datum get. : 29-11-2019 2

schaal : 1:300 / A3