



VISION PLAZA

Live, work and enjoy

BOEING AVENUE 202-300 - SCHIPHOL-RIJK - THE NETHERLANDS

VISION PLAZA





## Contents

4	<b>Vision Plaza</b> Feel good at the right place	12	<b>Comfortable</b> Enjoy the many facilities	14	<b>Unprecedented location</b> Discover Vision Plaza	16	<b>RichPort</b> In the middle of Business Park RichPort	18	<b>Hotspots</b> Be surprised by the surroundings	20	<b>Green environment</b> Unique green environmental concept
22	<b>Testfits</b> Wide variety of layout options	30	<b>Delivery level</b> Complete and sustainable	32	<b>Contact</b> Be inspired and informed about the many possibilities						

VISION PLAZA

# Feel good at the right place

Due to its beautiful location  
amidst greenery and  
the spacious layout of  
the grounds, you'll quickly  
feel at home.



Vision Plaza on Boeing Avenue in Schiphol-Rijk is a spacious, campus-like office complex where work and relaxation come together. Surrounded by greenery, water features, and a park-like environment, it offers an inspiring place where you can fully develop your potential.

The large office floors, filled with natural light and offering breathtaking views, create a productive work environment that enables you to perform at your best.

## Key-facts



### Campus

Campus-like layout with three office buildings and plenty of green space.



### Location

Located just a stone's throw from the A4, A9, and A5 motorways, Schiphol Airport, Hoofddorp, and Amsterdam.



### Parking

A very generous parking ratio of 1:30 m<sup>2</sup> in the car park, with a total capacity of 750 cars.



### Park

A spacious and uniquely designed complex surrounded by gardens and water features.



### Durable

The buildings are sustainable in terms of installations and have energy label A.



### Loading

Super-fast charging is available via rapid chargers in the car park and on the visitor deck.



### Facilities

Vision Plaza features, among other amenities, a restaurant, meeting rooms, a lounge area, and a reception service.



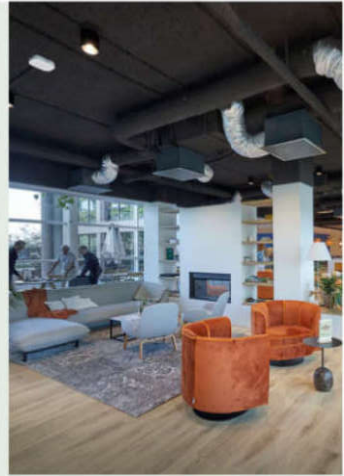
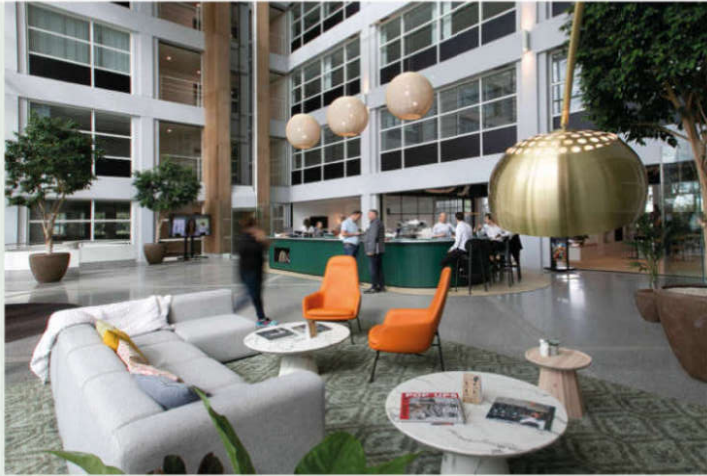
### Availability

Flexible options are available at Vision Plaza. View the inlay for current availability.





The lobby of Vision Plaza West features a central reception desk and barista bar. To the left is the entrance to the lounge and restaurant.



### Come in

The entrance of Vision Plaza West has recently been completely renovated and now exudes a modern, warm, and inviting atmosphere. You are welcomed by a hospitality hostess. The hospitality desk also serves as a coffee bar with a grab-and-go selection. There is an open and stylish waiting area for guests, a beautifully furnished lounge with a fireplace, and a large restaurant overlooking the garden. These facilities are also available to tenants of Vision Plaza Central and East.

### Availability

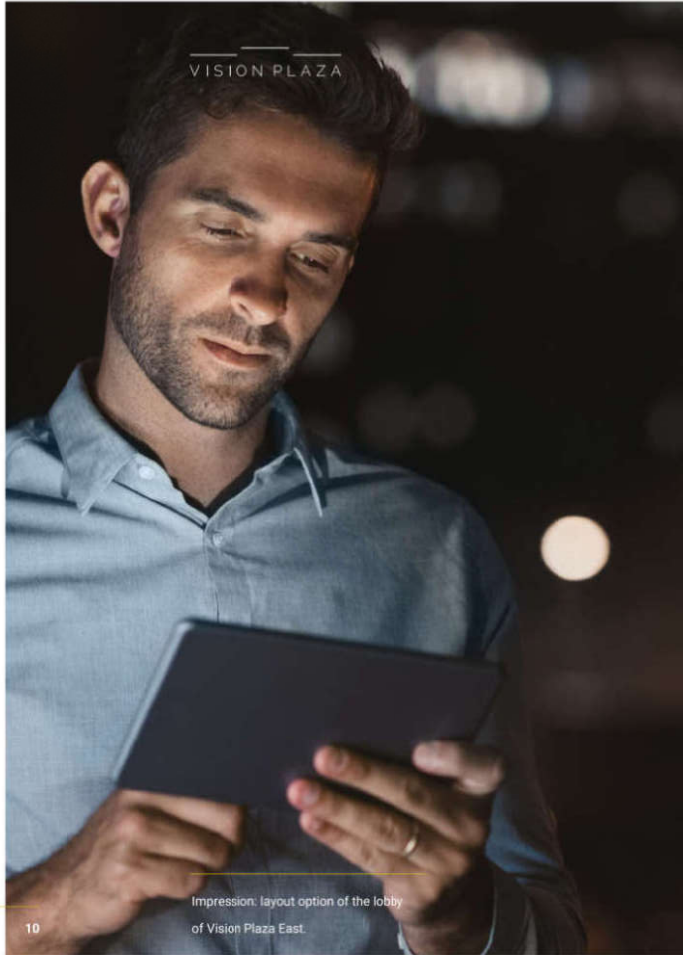
Vision Plaza offers premium office space on an expansive campus featuring three modern buildings with a total floor area of approximately 24,000 m<sup>2</sup>. Whether you're looking for a large, self-contained space or a flexible solution for your growing team, Vision Plaza offers options tailored to your needs.

The current availability can be found in the inlay of this brochure.

### Layout

The layout of Vision Plaza is particularly flexible, making it easy to divide and configure the floors. Thanks to the column-free construction and symmetrical floor plan, the extremely large floors of approximately 2,000 m<sup>2</sup> can be easily divided into various spaces. Access to all floors is well managed through multiple lifts and staircases.





Impression: layout option of the lobby  
of Vision Plaza East.





# Comfortable

Tenants can make use of all the facilities at Vision Plaza, including the meeting centre, lounge area, restaurant, and the surrounding park.



## Business centre

The business centre offers fully equipped office spaces starting from 50 m<sup>2</sup>. The lease term for these offices is flexible and can be arranged on a temporary and/or project basis.



## Conference centre

The conference centre offers spaces for 2 to 100 people. Lunch or dinner during a meeting can be arranged by the restaurant.



## Lounge area

In the lounge area, you can relax, enjoy the tranquility, read an inspiring book, or brainstorm with a colleague.



## Restaurant

The Vision Plaza restaurant serves fresh dishes and drinks every weekday. Enjoy a freshly prepared breakfast, healthy lunch, or dinner here.



## Parking and charging

The car park and parking deck (for visitors) offer ample parking and charging facilities, with a parking ratio of 1:30. The high charging capacity is unmatched in the area.



## Park

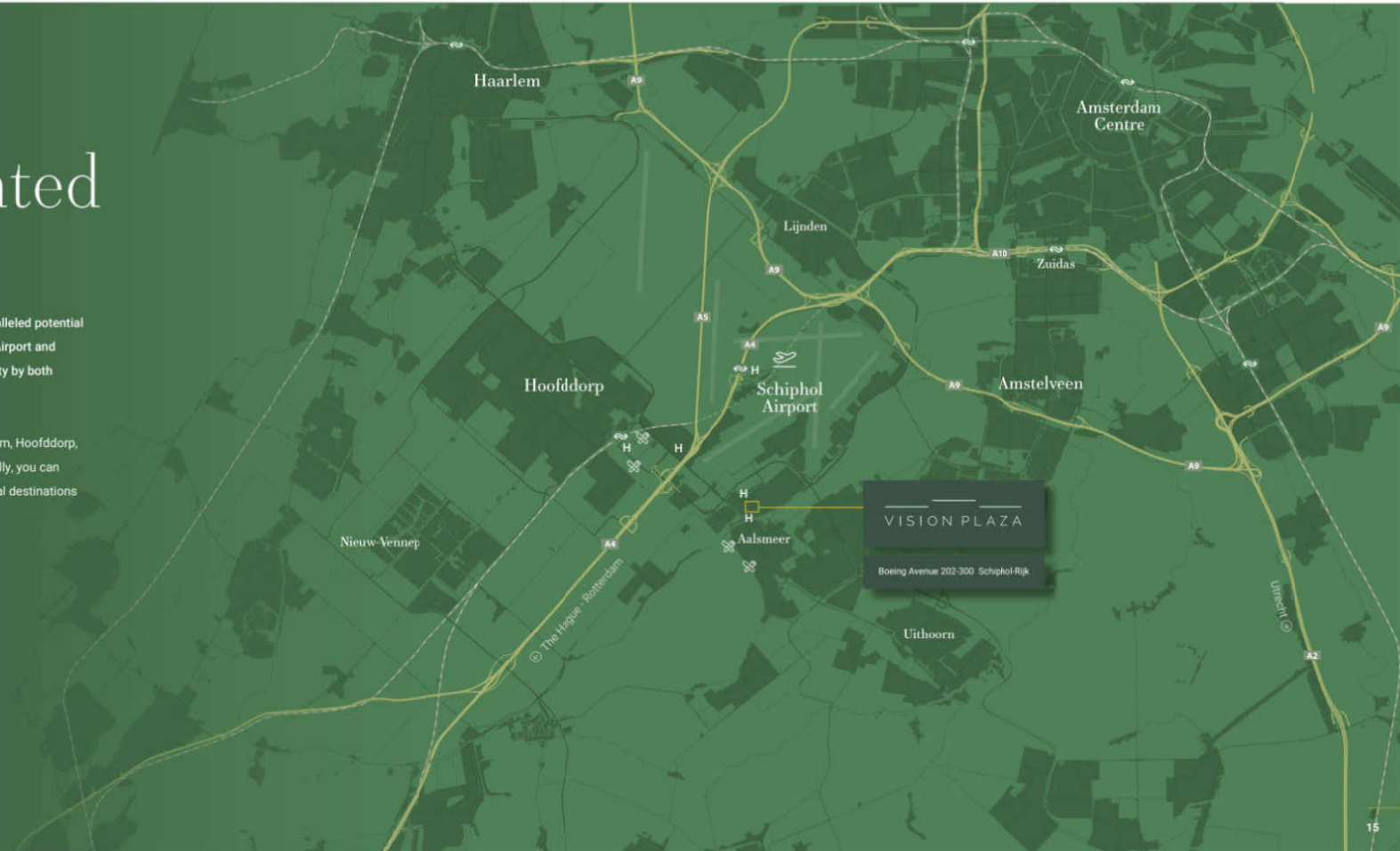
The park surrounding the office building offers tranquillity and nature. The numerous seating areas invite you to relax, hold meetings, enjoy lunch, or simply bask in the sunshine.

# Unprecedented location

The yet-to-be-discovered location of Vision Plaza offers unparalleled potential as a business destination. Just a stone's throw from Schiphol Airport and Amsterdam, there is ample space for development. Accessibility by both car and public transport is excellent.

The complex is located near major highways, making Amsterdam, Hoofddorp, and Schiphol Airport reachable within minutes by car. Additionally, you can travel effortlessly by train to numerous national and international destinations via Hoofddorp or Schiphol NS stations.

Travel times		 / 
Schiphol Airport	7 min.	18 min.
Hoofddorp	7 min.	14 min.
Amsterdam Zuidas	16 min.	31 min.
Amsterdam Centre	21 min.	45 min.
Rotterdam	44 min.	55 min.
Utrecht	38 min.	58 min.

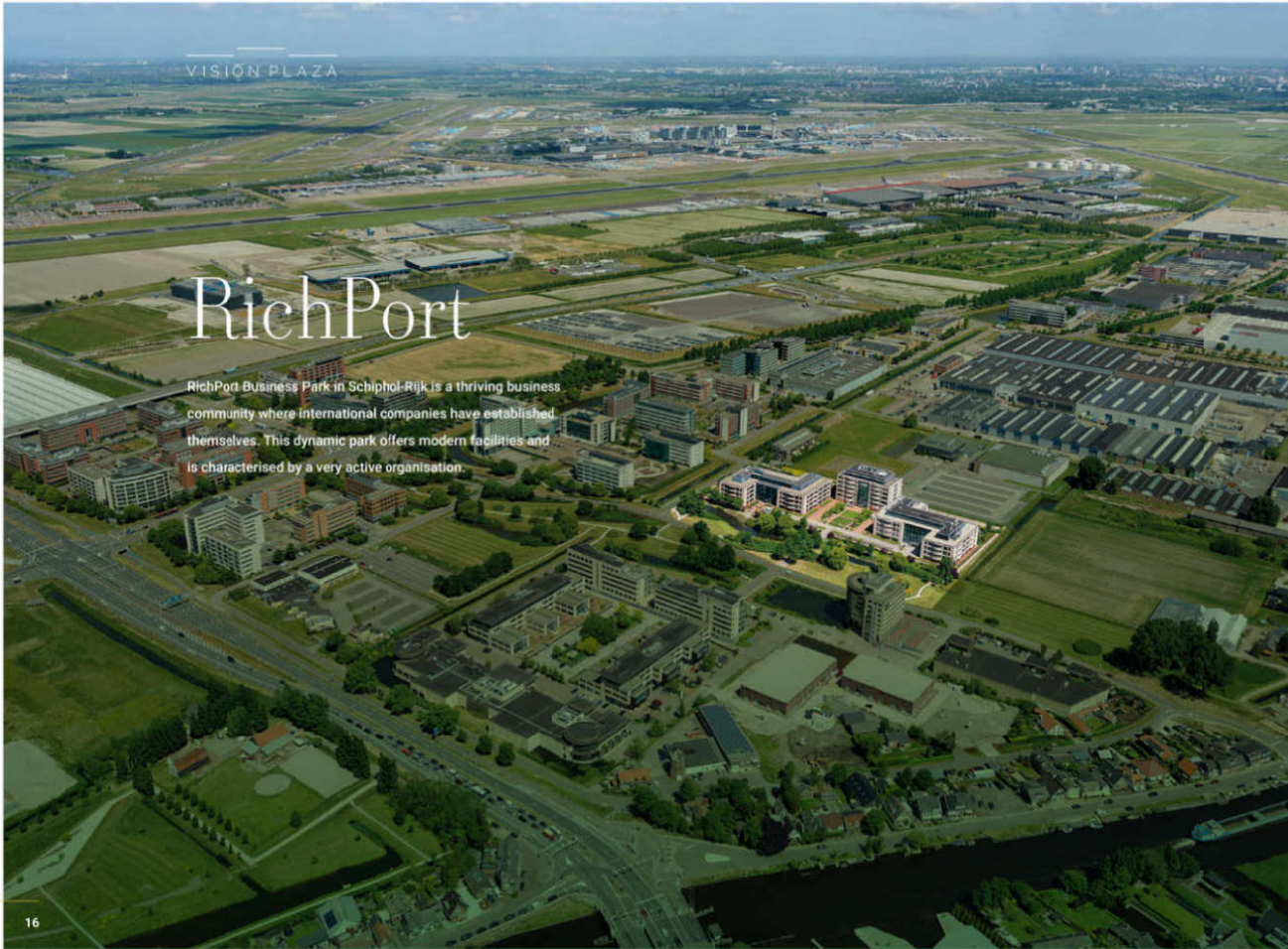




VISION PLAZA

# RichPort

RichPort Business Park in Schiphol-Rijk is a thriving business community where international companies have established themselves. This dynamic park offers modern facilities and is characterised by a very active organisation.



### Events

There is a strong policy aimed at organising various events, workshops, and networking gatherings, providing companies with the opportunity to grow and collaborate.

### Childcare

With a wide range of amenities and a strategic location near Schiphol, RichPort attracts businesses focused on international expansion and commercial growth. The park offers not only high-quality office spaces but also an inspiring environment where companies can develop and share knowledge.

### Sport

For more information, visit:  
[www.richport.nl](http://www.richport.nl)



# Hotspots

In the vicinity of Schiphol-Rijk, you will find numerous restaurants, shops, and hotels. Here are a few addresses that might come in handy:



Radisson Blu Hotel  
Amsterdam Airport  
Schiphol

Boeing Avenue 2, Schiphol-Rijk  
[www.radissonhotels.com](http://www.radissonhotels.com)



Hotel Novotel Amsterdam  
Schiphol Airport

Taurusavenue 12, 2132 LS, Hooftdorp  
[www.all.accor.com](http://www.all.accor.com)



Den Burgh

Fine dining in a stylishly renovated historic farmhouse with international allure. Here, classic and refined dishes are prepared using high-quality, honest ingredients, some sourced from the restaurant's own kitchen garden.

Open Monday to Friday from 12:00 to 14:00 (lunch) and from 17:30 to 21:00 (dinner)  
[www.denburgh.nl](http://www.denburgh.nl)



Masami

At Masami, the best of various continents comes together. Spices and ingredients from all corners of Asia are combined with the finest from Europe.

Open Monday to Friday from 12:00 to 21:00  
[www.masami.nl](http://www.masami.nl)



Joseph Aan de Poel

Here you can enjoy the relaxed bistro vibe of the Côte d'Azur combined with the luxurious allure of New York. In the morning, indulge in the finest coffee. Stay for a delightful lunch or join in the afternoon for a quality glass of wine.

Open daily from 12:00 to 01:00  
[www.josephaandepoel.nl](http://www.josephaandepoel.nl)



VISION PLAZA

# Unique green environmental concept

Sustainability is more important than ever, and Vision Plaza is proud to lead by example. Located in the greenest business park in the Netherlands, Vision Plaza was designed with a firm commitment: 50% of the site must be dedicated to landscaping.

This vision was achieved through our innovative concept of semi-underground parking beneath the buildings, allowing space above for lush gardens and vibrant plazas. The landscaping plan, crafted by renowned English architect Aukett, ensures a stunning palette of colors throughout every season. Vision Plaza demonstrates how thoughtful design can harmonize business and nature, creating a workplace that is as inspiring as it is sustainable.



# Testfits

A defining feature of Vision Plaza is the abundant natural light, which gives the office spaces an open and inviting atmosphere. The mechanical ventilation with advanced cooling ensures an optimal indoor climate, where all areas are quiet, energy-efficient, and can be both cooled and heated.

Thanks to the intelligent design of Vision Plaza, a wide variety of layout options can be implemented. Compared to other premium office buildings in the area, Vision Plaza offers an extremely efficient, flexible, and high-quality office concept. Suitable for various types of work environments, it accommodates a high occupancy rate, whether in single-tenant or multi-tenant configurations.



Impression of an open layout.





Impression of an open layout.

### Open layout variant

The distinctive feature of this layout variant is, of course, its open space character. The sightlines along the façades add an extra dimension to the spatial experience. For meetings, various spaces can be created, both between the islands themselves and in enclosed areas.

*Ask one of the brokers about the possibilities.*





Impression of a mixed layout.

### Mixed layout variant

This more traditional layout features a combination of closed and open office spaces positioned along the façades, allowing them to make the most of natural daylight. The facilities such as the reception area, meeting rooms, and storage spaces are more centrally located around the core.

*Ask one of the brokers about the possibilities.*







Impression of a mixed layout.



# Delivery level

The office spaces at Vision Plaza are delivered to a high standard and fully equipped.

The impressive entrance with an atrium creates a sense of space and light, where panoramic lifts add an extra dimension to the stylish reception.

The office spaces feature various toilet facilities in each section of the building.

The suspended ceilings are equipped with LED lighting and motion detectors, contributing to energy efficiency and ease of use.

Cable trays have been carefully placed for data and electrical cabling, ensuring that all technical installations can be seamlessly integrated.

Vision Plaza features mechanical ventilation with advanced cooling for a pleasant and consistent indoor climate.

For added comfort, all windows can be opened.



## Contact

Are you curious about how you can shape your own vision within Vision Plaza? We would be delighted to inform you about all the possibilities.



**Marijke Toenbreker**  
marijke@btmakelaars.nl  
+31 (0)20 3 166 166

**Michiel Hustinx**  
mchiel@btmakelaars.nl  
+31 (0)20 3 166 166



**Ewout Frima**  
ewout.frima@cbre.com  
+31 (0)6 526 552 45

**Tim Drixler**  
tim.drixler@cbre.com  
+31 (0)6 831 754 36

**DISCLAIMER**

The data in this brochure and any attachments are of an informative nature. They are intended to support the reader with the subject property and serve as an invitation to enter into negotiations. All information has been compiled with care and is from reliable sources. However, we cannot accept liability for its accuracy. No rights can be derived from this information.

Design and realization: BDKW







VISION PLAZA



VISIONPLAZA.NL