



Projectinformation

Building Toro

Taurusavenue 133
Hoofddorp

To Let

Office space in Toro building located on office area Beukenhorst Zuid in Hoofddorp

Taurusavenue 133 in Hoofddorp

Project description

On the prominent Beukenhorst Zuid office park in Hoofddorp, approx. 3,080 sq m of high-quality office space is available in one of the striking buildings, comprising the entire 2nd and 3rd floors. It concerns the sustainable, modern designed Toro building which, due to the recent upgrade of the central entrance hall, offers a pleasant and lively working environment with lounge areas, a manned coffee bar/reception and an branch of the restaurant "The Farm Kitchen" of chef Jonathan Karpathios. An innovative food concept that, according to the chef, fits right in with the "new way of working" post-Corona.

The Toro building is situated in a unique location directly along the Geniedijk (Defence Line of Amsterdam and UNESCO world heritage site), next to the monumental farm of restaurant Den Burgh. The parking facilities are directly accessible from the Taurusavenue.

The park Beukenhorst South has much to offer the office user: there are inviting walking paths, greenery and water and within walking distance are several opportunities to drink coffee on a terrace, to have lunch or dinner or just informally chat.

The building was built in 2012 and user Schneider Electric has recently renewed the lease for the ground and 1st floor.

Location

Accessibility is excellent with the A4/A44 motorway exit (Amsterdam - The Hague - Rotterdam) and the A5 motorway just a few minutes away by car. The Taurusavenue serves as the central approach road to Hoofddorp. Schiphol Airport can be reached by car within 10 minutes. The NS-station Hoofddorp and a stop of R-Net, are at walking distance. R-Net is a (largely) free bus route with a fast bus connection between Haarlem via Schiphol to Amsterdam-Zuidoost (line 300) and between Nieuw-Vennep via Schiphol to Amsterdam Zuid WTC (line 310). Further information about travelling with R-Net can be found on connexion.nl

Surface area

The building has a total of approx. 5.630 sq m office space, of which approx. 3.080 sq m currently available, divided as follows:

2nd floor: approx. 1.540 sq m;

3th floor: approx. 1.540 sq m.

Parking

The offered office space includes 67 parking spaces, which are located on private property and closed off by a barrier. This means a very generous parking ratio of one parking space per approx. 45 sq m of leased office space.

Charging stations for electric vehicles are available.

State of delivery

The building/ office space features include, amongst other things:

- spacious central entrance hall with lobby, lounge, coffee bar and reception;
- Atrium over the entire height of the building;
- two elevators;
- 2 double toilet groups per floor. These will be expanded in number;
- suspended ceilings with led lighting fixtures;
- floor-to-ceiling windows with windows that can be opened per 3.60 m pattern;
- Cable ducts with electricity and connection points for data cabling;
- Top cooling and heating by means of induction units in the ceiling.

A heat pump is used for cooling. In time, this will also be used to heat the building.

The building has energy label A and a BREAAAM New Building Certificate.

Rental price

The rental price for the office units is € 215 per sq m per year excluding VAT and service charges.

The rental price for the parking places is € 1.650 per place per year excluding VAT.

Lessor and Lessee explicitly declare that in determining the rent, the rent level is based on the starting point that Lessee will permanently utilise a minimum percentage as determined by law (or at a later stage to be determined) of the leased space for purposes giving right to VAT deductions, so that taxed rent may be opted for.

Service charges

The service charges are € 50 per sq m per year excluding VAT as an advanced payment with a yearly settlement based on actual cost.

Acceptance

In consultation, at short notice.

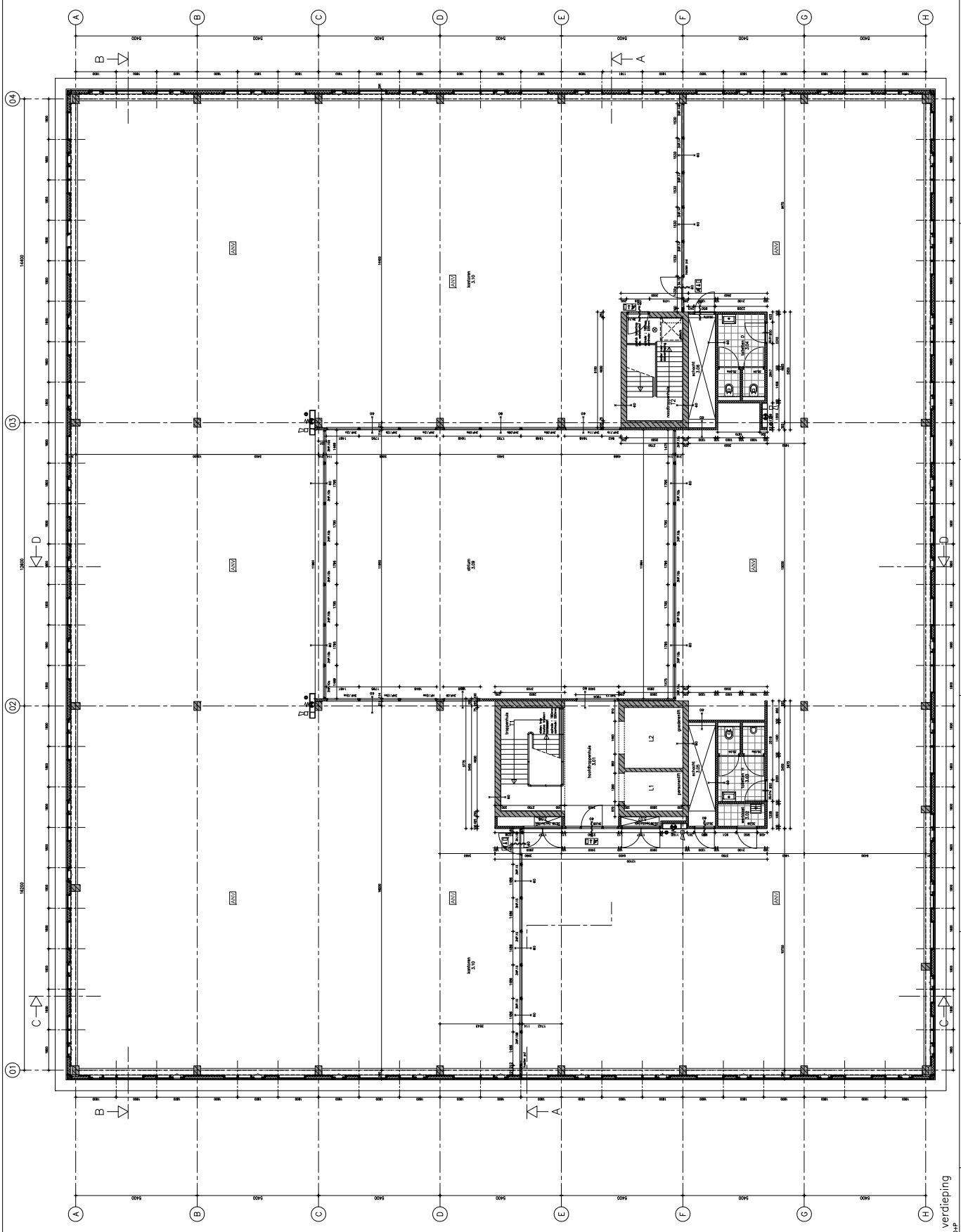
Although BT Makelaars takes due care in compiling all information provided, the accuracy of the content cannot be guaranteed and no rights or obligations can be derived from the information provided.











Opmerkingen
 alle afmetingen in millimeter.
 voor alle afmetingen is de afmeting van buiten af bedoeld.

Deelnamen
 - Betonvloer met 100 mm beton
 - Betonvloer met 150 mm beton
 - Betonvloer met 200 mm beton
 - Betonvloer met 250 mm beton
 - Betonvloer met 300 mm beton
 - Betonvloer met 350 mm beton
 - Betonvloer met 400 mm beton
 - Betonvloer met 450 mm beton
 - Betonvloer met 500 mm beton
 - Betonvloer met 550 mm beton
 - Betonvloer met 600 mm beton
 - Betonvloer met 650 mm beton
 - Betonvloer met 700 mm beton
 - Betonvloer met 750 mm beton
 - Betonvloer met 800 mm beton
 - Betonvloer met 850 mm beton
 - Betonvloer met 900 mm beton
 - Betonvloer met 950 mm beton
 - Betonvloer met 1000 mm beton

Materialen
 - Beton
 - Staal
 - Glas
 - Hout
 - Plaat
 - Isolatie
 - Dak
 - Dakpannen
 - Dakleien
 - Daktegels
 - Dakrollen
 - Dakolie
 - Dakwater
 - Dakafvoer
 - Dakgoot
 - Dakgootafvoer
 - Dakgootkroon
 - Dakgootkroonafvoer
 - Dakgootkroonafvoer
 - Dakgootkroonafvoer

Structuur
 - Beton
 - Staal
 - Glas
 - Hout
 - Plaat
 - Isolatie
 - Dak
 - Dakpannen
 - Dakleien
 - Daktegels
 - Dakrollen
 - Dakolie
 - Dakwater
 - Dakafvoer
 - Dakgoot
 - Dakgootafvoer
 - Dakgootkroon
 - Dakgootkroonafvoer
 - Dakgootkroonafvoer
 - Dakgootkroonafvoer

Gevels
 - Beton
 - Staal
 - Glas
 - Hout
 - Plaat
 - Isolatie
 - Dak
 - Dakpannen
 - Dakleien
 - Daktegels
 - Dakrollen
 - Dakolie
 - Dakwater
 - Dakafvoer
 - Dakgoot
 - Dakgootafvoer
 - Dakgootkroon
 - Dakgootkroonafvoer
 - Dakgootkroonafvoer
 - Dakgootkroonafvoer

Roof
 - Beton
 - Staal
 - Glas
 - Hout
 - Plaat
 - Isolatie
 - Dak
 - Dakpannen
 - Dakleien
 - Daktegels
 - Dakrollen
 - Dakolie
 - Dakwater
 - Dakafvoer
 - Dakgoot
 - Dakgootafvoer
 - Dakgootkroon
 - Dakgootkroonafvoer
 - Dakgootkroonafvoer
 - Dakgootkroonafvoer

Overige
 - Beton
 - Staal
 - Glas
 - Hout
 - Plaat
 - Isolatie
 - Dak
 - Dakpannen
 - Dakleien
 - Daktegels
 - Dakrollen
 - Dakolie
 - Dakwater
 - Dakafvoer
 - Dakgoot
 - Dakgootafvoer
 - Dakgootkroon
 - Dakgootkroonafvoer
 - Dakgootkroonafvoer
 - Dakgootkroonafvoer

van Rossum
 Architectuur
 Schiedamschen dijk 100
 1075 XZ Schiedam
 T +31 (0)10 431 1111
 F +31 (0)10 431 1112
 E info@vanrossum.nl
 www.vanrossum.nl

Project
 Projectnaam: 3e verdieping
 Projectlocatie: 10800-P
 Projectnummer: 11-017
 Projectstatus: In uitvoering
 Projectstart: 2011-01-01
 Projecteinde: 2011-01-01

Ontwerper
 Ontwerper: van Rossum
 Ontwerperadres: Schiedamschen dijk 100, 1075 XZ Schiedam
 Ontwerpertelefoon: +31 (0)10 431 1111
 Ontwerperfax: +31 (0)10 431 1112
 Ontwerperemail: info@vanrossum.nl
 Ontwerperweb: www.vanrossum.nl

Uitvoerder
 Uitvoerder: [naam]
 Uitvoerdersadres: [adres]
 Uitvoerderstelefoon: [telefoon]
 Uitvoerdersfax: [fax]
 Uitvoerdersemail: [email]
 Uitvoerdersweb: [web]

Beleg
 Beleg: 11-017
 Belegnummer: 11-017
 Belegstatus: In uitvoering
 Belegstart: 2011-01-01
 Belegendeinde: 2011-01-01