



Project Information

Boeingavenue 154

Boeingavenue 154
Schiphol-Rijk

To let

Office space for social purposes at RichPort Park Schiphol-Rijk

Boeingavenue 154, Schiphol-Rijk

Project description

Approx. 336 sq m office space situated on the 1st floor in a modern 2-storey building. Compananny is located on the ground floor, which provides a nursery and day-care facility outside of school hours (compananny.nl). The office space is suitable for social purposes such as education, health care, public services, etc.

Richport Park Schiphol-Rijk is an office park in a well-kept environment with spacious water features and associated vegetation. The park offers several hotels, such as the Radisson Blu, including several meeting facilities, and a restaurant. The hotels have shuttle busses from and to Schiphol Airport. RichPort Park Schiphol-Rijk has a park management organization. Characteristic for this is a coordinated, joint use of several facilities, maintenance of green roads, and security are taken care of by the park management on behalf of the Cooperation.

Location

The business park is located close to the exit of the A44/A4/A5 highway to Amsterdam, Haarlem, The Hague and Rotterdam and the N201. The location is also easily accessible from the A9 highway and Amstelveen. Schiphol Airport and the train station of Hoofddorp are only a few minutes away by car or public transport. Public transport to and from RichPort Park Schiphol-Rijk is operated by Connexion and R-Net. At the entrance of de park (Fokkerweg/Kruisweg crossing), within close proximity to the offices situates the "connection Schiphol Zuid" where the busses have a frequency of every 7 minutes during rush hour, and every 15 minutes outside of rush hour. With the Connexion circle line 180/181, the R-Net bus line 340 and the regular bus line the entire region of Schiphol, Amsterdam and Hoofddorp will be available. For detailed information, go to vervoerregio.nl.

Surface area

Approx. 336 sq m office space situated at the backside of the 1st floor.

Parking

There is a sufficient amount of parking spaces available on a short distance of the building.

State of delivery

The building / office space will include:

- representative entrance;
- elevator;
- electrically operated skylight via the roof;
- sanitary facilities;
- suspended ceilings with built-in lighting fixtures.

The building is provided with energy label A.

Rental price

The rent for the office space is € 90 per sq m per year, excluding VAT and service charges. The rent for the parking places is € 950 per place per year, excluding VAT.

Lessor and Lessee explicitly declare that in determining the rent, the rent level is based on the starting point that Lessee will permanently utilise a minimum percentage as determined by law (or at a later stage to be determined) of the leased space for purposes giving right to VAT deductions, so that taxed rent may be opted for.

Service charges

The service charges are € 30 per sq m per year, excluding VAT as an advance payment with a yearly settlement based on actual cost.

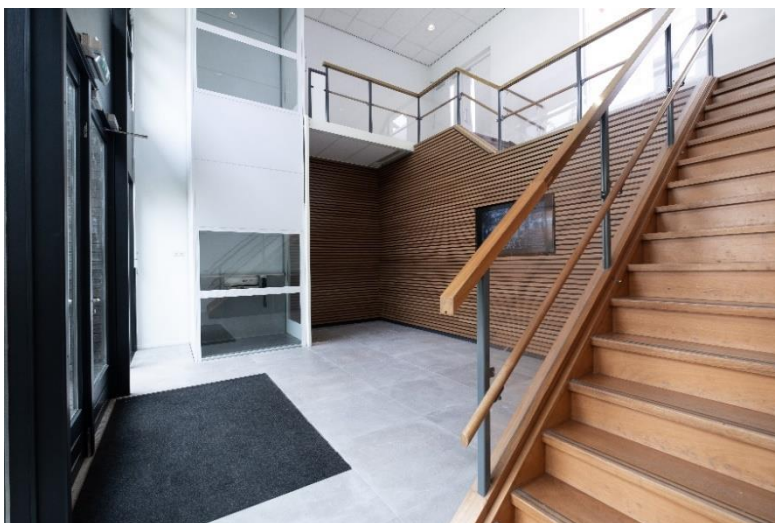
Zoning plan

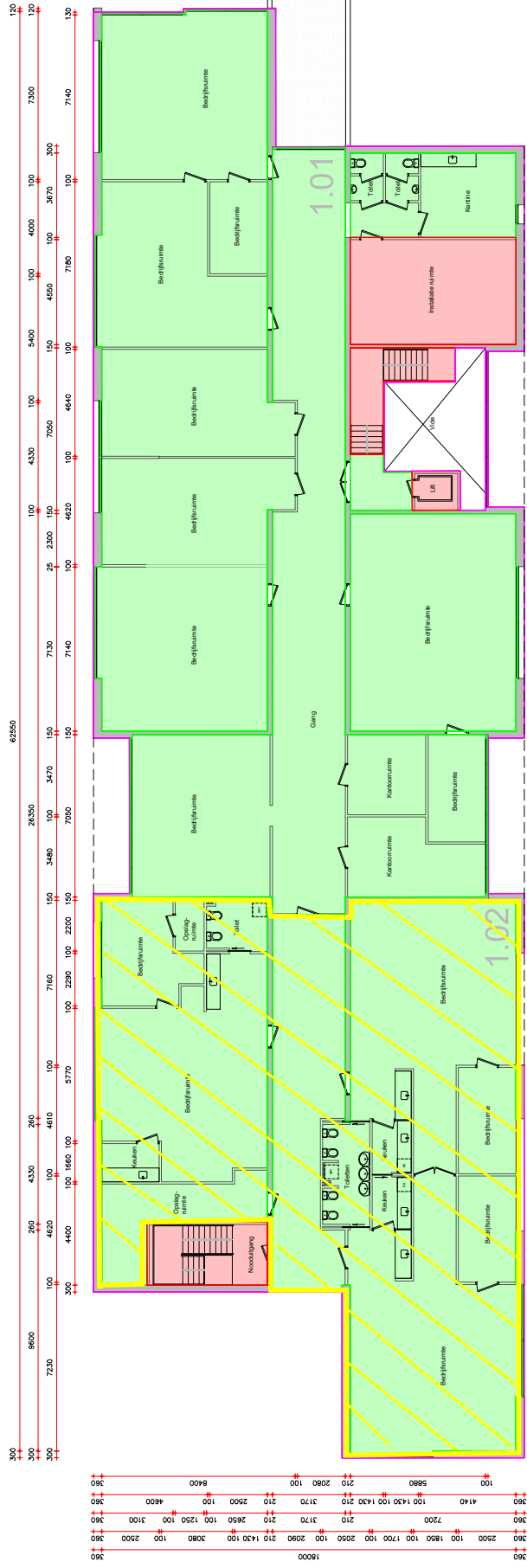
The zoning plan 'Schiphol-Rijk' is applicable, the use of the land is "Maatschappelijk", intended for social purposes such as education, health care, public services, etc.

Acceptance

At short notice.

Although BT Makelaars takes due care in compiling all information provided, the accuracy of the content cannot be guaranteed and no rights or obligations can be derived from the information provided.





Rem/VOC

—	Dringende wanden (behaaft op basis van de dikte van de wand)
—	de wand-afgevoerd (behaaft op basis van de dikte van de wand)
—	VOC Bedrijfsruimte
—	VOC Algemene ruimte, gebouw niveau
—	VOC Algemene ruimte, bouwrijp niveau
—	Uitgekleed aan VVO

OMSCHRIJVING | Liwering BVO en VVO complete, Boeing Avenue 152-154, Schiphol-Rijk

OPDRACHTGEVER | Bagnas Group

VERBODING | Ervaren bouw

TOEGANG | 1100

SCHAAL | 1:100

FORMAAT | A1

DATUM | 24-06-2020

TELEFOONNUMMER | 040-2000000

EN **EN VERBODEN**

Roos Willemsweg 47
3813 XG Amstelveen
Tel: 020 486 6671
Fax: 020 486 6672
www.en.nl

BA 1.02

Wf:1: ---
Wf:2: ---
Wf:3: ---
Wf:4: ---
Wf:5: ---
Wf:6: ---

Architect: J.H.B.G. 71
Schiedamschen dijk 100
1017 CA Amsterdam
Tel: 020 612 3333
Fax: 020 612 3334
www.en.nl