



Project Information

Penta Building

Siriusdreef 1-15
Hoofddorp

To let

Office space in Penta Building situated at office park Beukenhorst-Oost

Siriusdreef 1-15, Hoofddorp

Project description

The small office pavilion Penta consists of approx. 2,760 sq m office space and is situated in the office park Beukenhorst-East. Currently approx. 712 sq m on the 2nd floor and approx. 355 sq m on the 3rd floor is available. Both office spaces are in a turn-key state and fitted with, amongst others, carpeting, partitioning walls, suspended ceiling with LED lighting and pantry. The office building has a representative entrance with wide and open staircase, access control system, sanitary facilities per floor/wing and generous parking facilities on private ground. The office building has an excellent location situated on the office park Beukenhorst-East.

Location

Accessibility is without a doubt excellent with the A4 / A44 (Amsterdam - The Hague - Rotterdam), and the A5 a few car minutes away. Schiphol Airport is reachable within 10 minutes by car. The NS-railway station Hoofddorp is a short distance away. At the NS station there is a stop of the free bus lane R-Net, the superfast bus connection between Haarlem via Schiphol to Amsterdam-Zuidoost (line 300) and between Nieuw-Vennep via Schiphol to Amsterdam Zuid WTC (line 397). Further information can be found on Rnet.nl or connexion.nl.

Parking

There are sufficient parking places available at the private parking area located in front of the building, based on a parking standard of 1 place per approx. 40 sq m rented office space. Visitors can enter the parking area by means of the access barrier.

Surface area

The building has a total surface area of approx. 2,760 sq m, of which currently available:

2nd floor : approx. 712 sq m;
3rd floor : approx. 355 sq m.

State of delivery

The building/the office features include:

- spacious, representative entrance with wide and open staircase;
- elevator;
- windows that can be opened with heat- and sun-resistant glazing;
- pantry;

- barrier equipped with access control system;
- suspended ceiling with LED lighting;
- mechanical ventilation with top cooling;
- sanitary facilities per floor/wing.

The building is provided with energy label C.

Rental price

The rental price for the office space is € 145 per sq m per year excluding VAT and service charges.

The rental price for the parking places is € 950 per place per year excluding VAT.

Lessor and Lessee explicitly declare that in determining the rent, the rent level is based on the starting point that Lessee will permanently utilise a minimum percentage as determined by law (or at a later stage to be determined) of the leased space for purposes giving right to VAT deductions, so that taxed rent may be opted for.

Service charges

The service charges are € 45 per sq m per year excluding VAT as an advance payment with a yearly settlement based on actual costs.

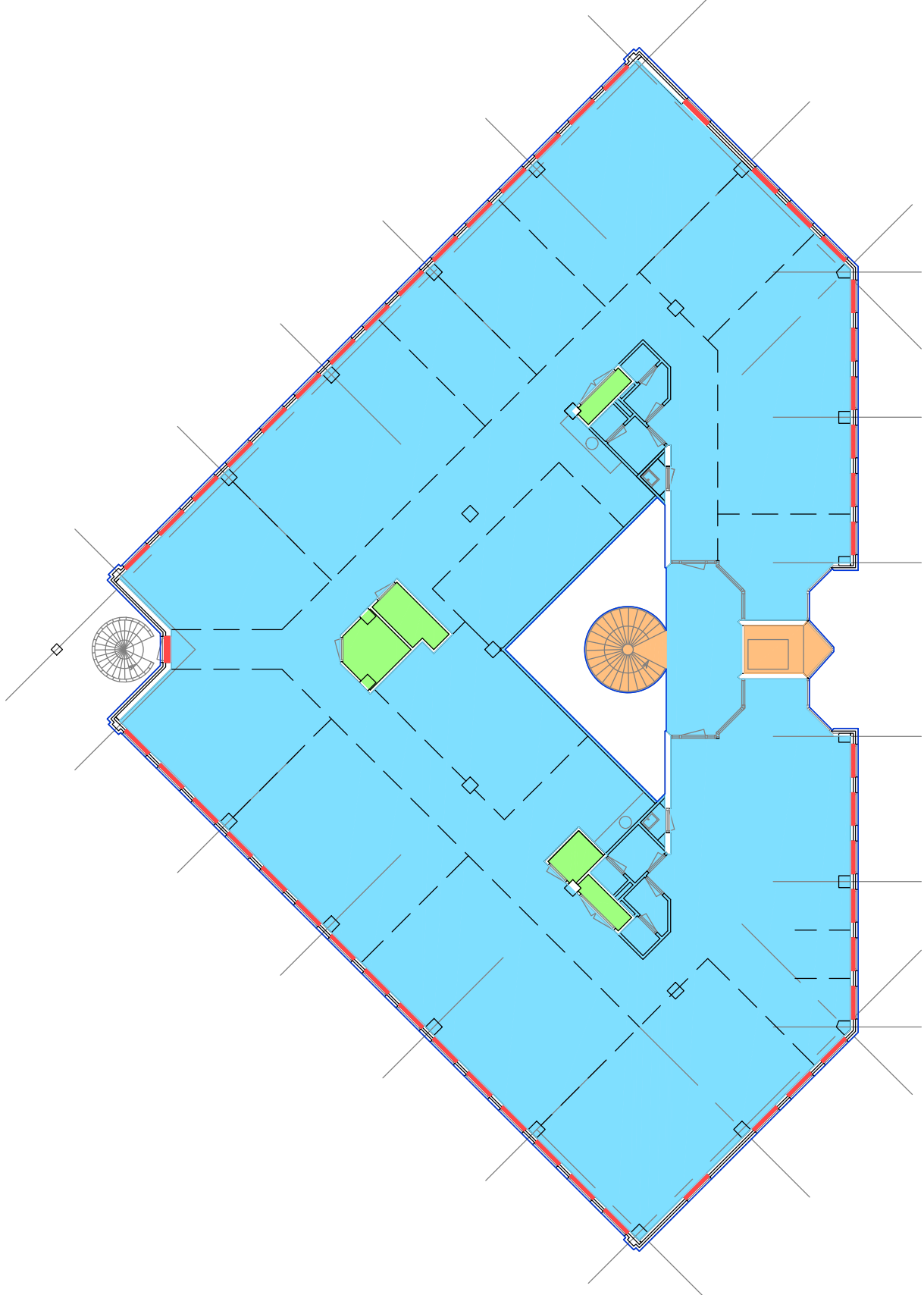
Acceptance

On short notice.

Although BT Makelaars takes due care in compiling all information provided, the accuracy of the content cannot be guaranteed and no rights or obligations can be derived from the information provided.



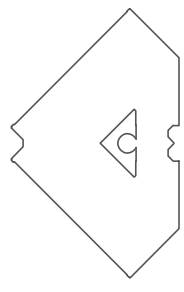




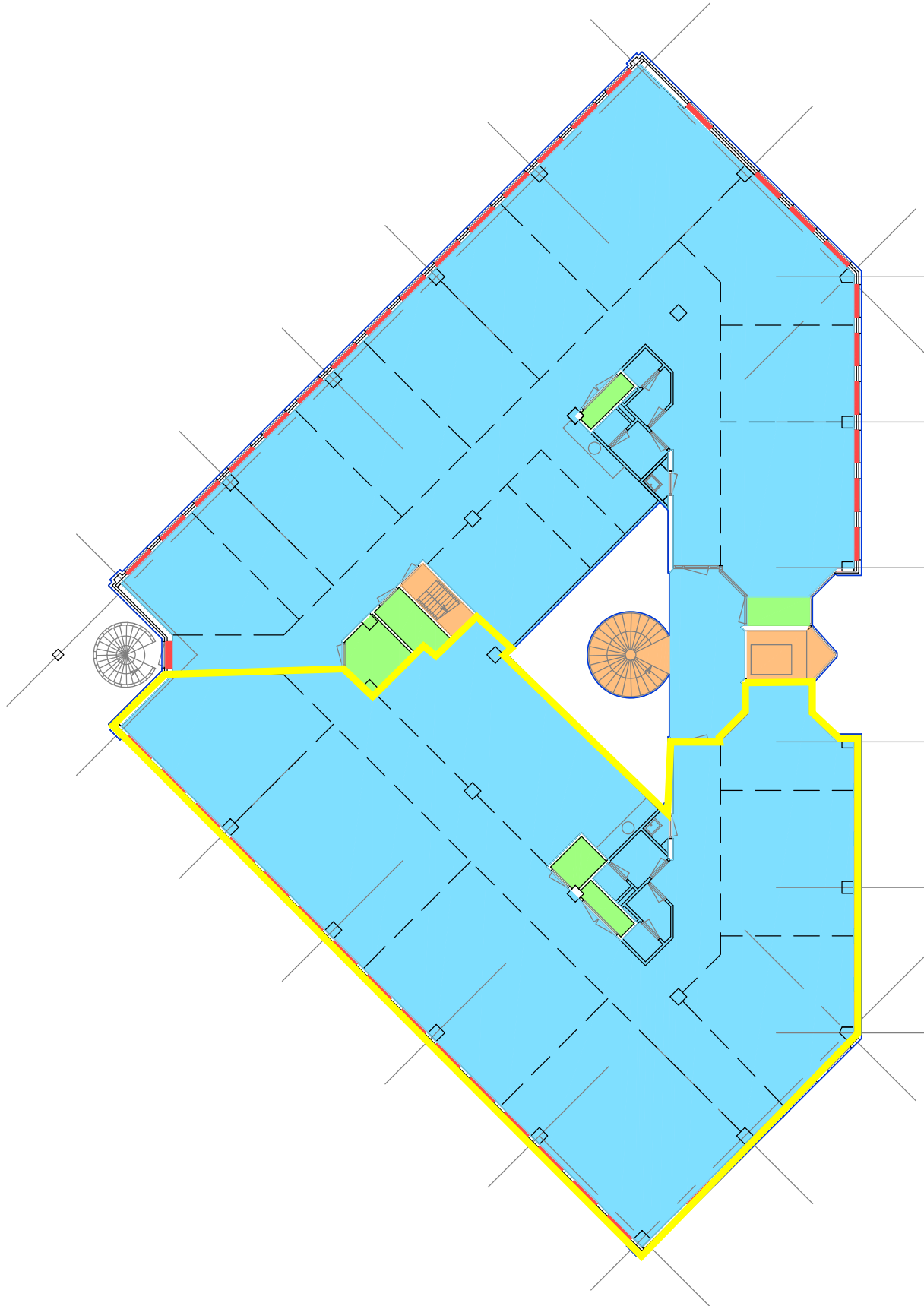
2e verdieping

Renvooi

Brutovloeroppervlakte	749,34 m ²
Verhuurbaarvloeroppervlak	694,01 m ²
Parkeeroppervlak	0,00 m ²
bijv.: Gemeenschappelijk	0,00 m ²
Glaslijncorrectie	9,51 m ²
Installatieoppervlak	12,77 m ²
Verticaal verkeersoppervlak	12,98 m ²
Ruimte lager dan 1,5 m	0,00 m ²



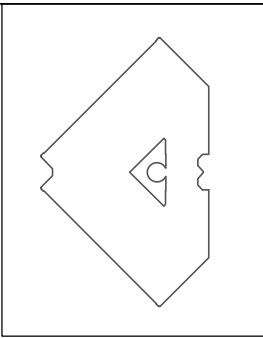
NEN 2580 meetstaat	
Search	
Search Ingenieursbureau B.V.	
Onschrijving:	2e verdieping
Adres:	Siriusdreef 1-15
Plaats:	Hoofddorp
Opdrachtgever:	ELQ Investors II Ltd
Projectnummer:	26.15.00060.1
Datum:	8 april 2015
Datum wijz:	8 april 2015
Getekend:	WVA
Gezien:	FKE
Formaat:	ISO FULL BILEED A3 (297,00 X 420,00 N
Schaal:	1:NT



3e verdieping

Renvooi

Brutovoeroppervlakte	749,34 m ²
Verhuurbaarvloeroppervlak	687,94 m ²
Parkeeroppervlak	0,00 m ²
bijv.: Gemeenschappelijk	0,00 m ²
Glaslijncorrectie	9,51 m ²
Installatieoppervlak	15,17 m ²
Verticaal verkeersoppervlak	16,13 m ²
Ruimte lager dan 1,5 m	0,00 m ²



NEN 2580 meetstaat 	
Search Ingenieursbureau B.V.	
Onschrijving:	3e verdieping
Adres:	Siriusdreef 1-15
Plaats:	Hoofddorp
Opdrachtgever:	ELQ Investors II Ltd
Projectnummer:	26.15.00060.1
Datum:	8 april 2015
Datum wijz:	8 april 2015
Getekend:	WVA
Gezien:	FKE
Formaat:	ISO FULL BILEED A3 (297,00 X 420,00 N
Schaal:	1:NT