



Projectinformatie

Daalmeerstraat 13

Daalmeerstraat 13
Hoofddorp

To let

Warehouse/office unit at business park Hoofddorp Noord in Hoofddorp

Daalmeerstraat 13, Hoofddorp

Project description

Combined modern warehouse/office unit of approx. 800 sq m. The unit is part of a larger complex at the Daalmeerstraat/Noordmeerstraat on business park Hoofddorp Noord close to the ring road of Hoofddorp. The complex has a large outside terrain for parking and loading/unloading.

Location

The complex is situated at business park Hoofddorp Noord, which offers a large variety of mainly local and regional operating companies and entrepreneurs.

Furthermore there are various other functions such as sport facilities/schools, catering- and lunch facilities and other types of business. The business park is accessible via the N201 ring motorway (de weg om de Noord), the Hoofdweg westzijde and the J.C. Beetslaan.

Surface area

The available space consists of:

warehouse:	ground floor:	approx. 510 sq m;
office space:	ground floor:	approx. 146 sq m;
	first floor:	approx. 145 sq m.

State of delivery

The warehouse is among others provided with:

- skylight;
- electrically operable overhead door;
- free height approx. 5.5 m;
- floor load 2,500 kg/sq m;
- certified sprinkler installation;
- three gas heaters.

The office space is among others provided with:

- suspended ceilings with build in light fittings;
- electrical sun blinds;
- sanitary facilities on the ground floor and first floor;
- pantry on the ground floor.

De unit is provided with energy label A.

Parking

To unit comes with 4 parking places situated directly in front of the unit.

Rental price

The rental price is available on request.

Lessor and lessee explicitly declare that in determining the rent, the rent level is based on the starting point that lessee will permanently utilise a minimum percentage as determined by law (or at a later stage to be determined) of the leased space for purposes giving right to VAT deductions, so that taxed rent may be opted for.

Service charges

The service charges are € 5 per sq m per year excluding VAT as an advanced payment with a settlement based on actual cost.

Acceptance

At short notice.

Although BT Makelaars takes due care in compiling all information provided, the accuracy of the content cannot be guaranteed and no rights or obligations can be derived from the information provided.

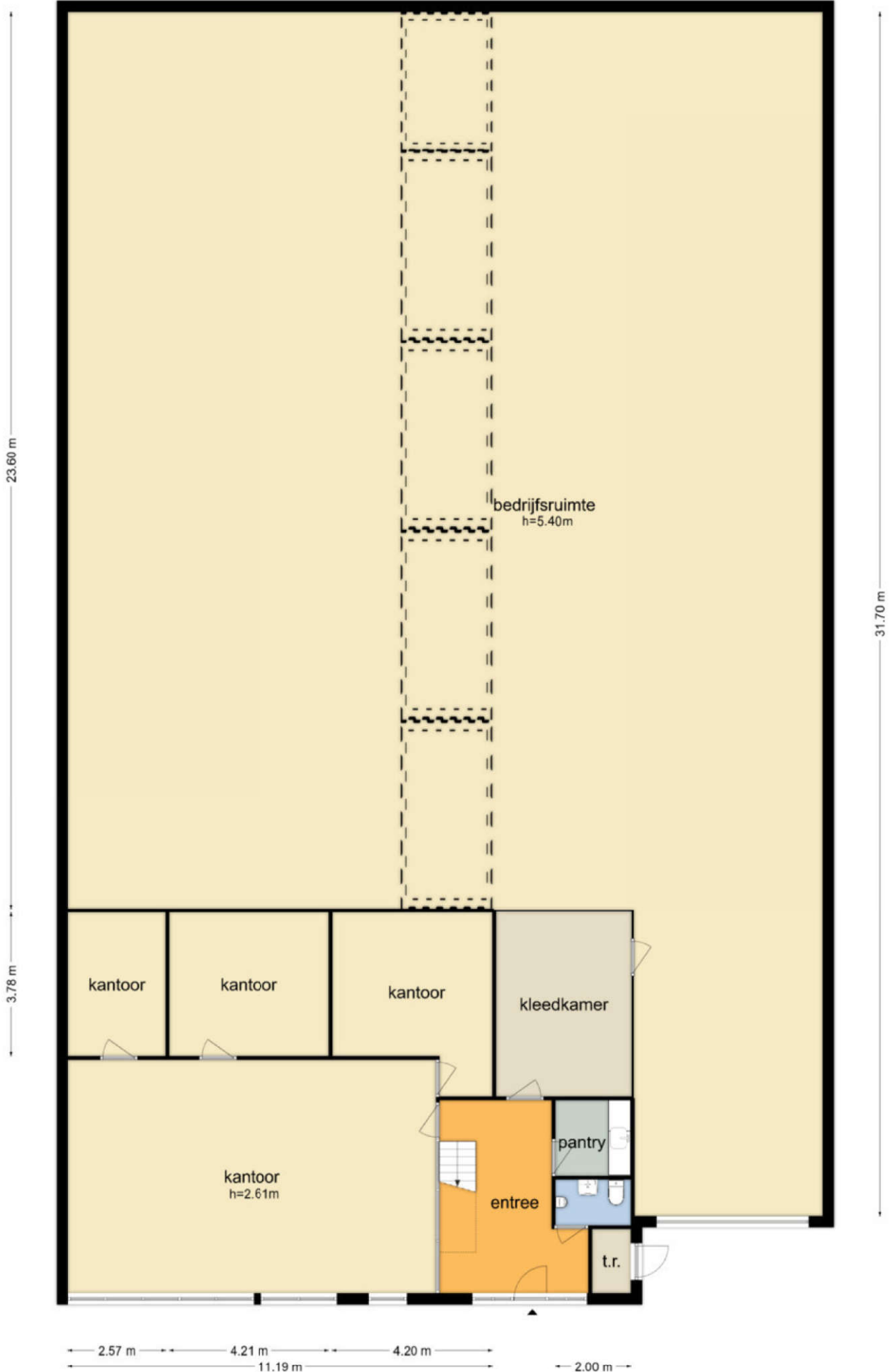






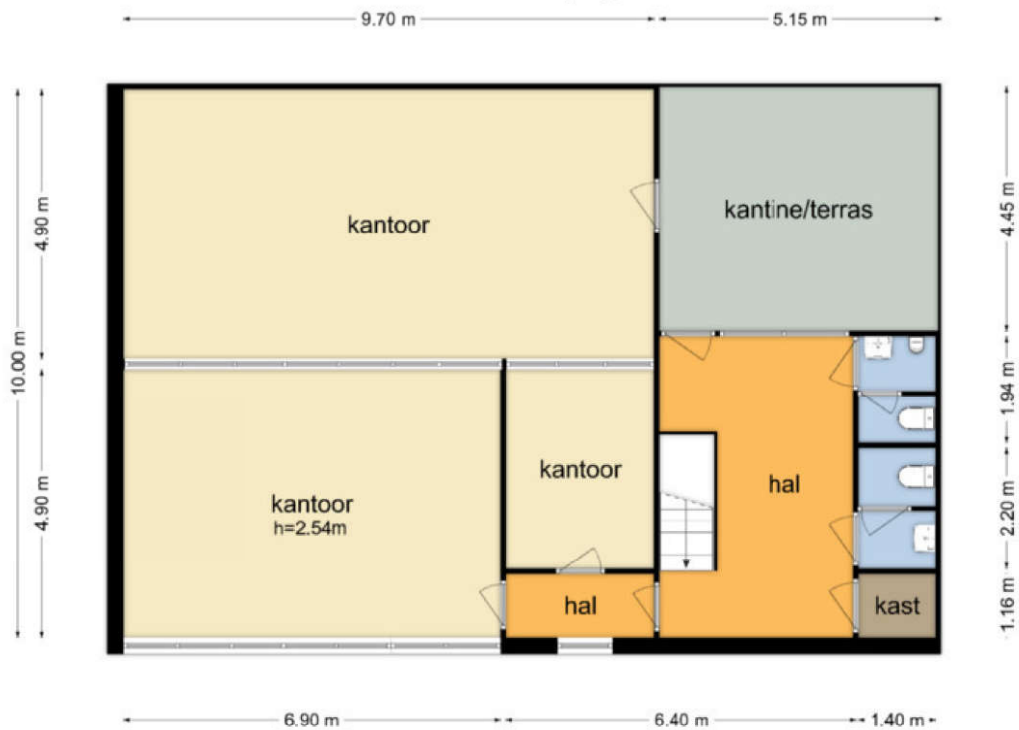
Daalmeerstraat 13 - Hoofddorp
Begane Grond

19.90 m



De plattegronden zijn geproduceerd voor promotionele doeleinden en ter indicatie.
Aan de plattegronden kunnen geen rechten worden ontleend
© www.objectenco.nl

Daalmeerstraat 13 - Hoofddorp
Eerste Verdieping



De plattegronden zijn geproduceerd voor promotionele doeleinden en ter indicatie.
Aan de plattegronden kunnen geen rechten worden ontleend
© www.objectenco.nl