



Project Information

Beechavenue

Beechavenue 30
Schiphol-Rijk

To let

Office floor (penthouse) at RichPort Park in Schiphol-Rijk

Beechavenue 30, Schiphol-Rijk

Project description

Turn-key office space on the whole 5th (highest) floor of approx. 324 sq m situated with a private roof terrace. The building of approx. 3,765 sq m in total has a modern central entrance hall with seating areas that the tenants (and their guests) may use.

The available space features industrial ceilings with LED lighting, PVC flooring and a well-equipped kitchen with appliances and bar.

RichPort Park Schiphol-Rijk is an office park in a very well-kept environment with spacious water features and associated green areas. Two hotels are situated in the park, including the Radisson Blu, which offers several meeting facilities and a restaurant. The hotels have shuttle services to and from Schiphol Airport. Furthermore, CompaNanny is located nearby, which provides a nursery and day-care facility outside of school hours (compananny.nl). The park has a park management organisation. Characteristic of this organisation is the coordinated, joint use of several facilities on the business park. Services such as maintenance of public and private grounds, green areas, water features, and security are taken care of by the park management on behalf of the Cooperation.

Location

The business park is located close to the exit of the A44/A4/A5 highway to Amsterdam, Haarlem, The Hague and Rotterdam and the N201. The location is also easily accessible from the A9 highway and Amstelveen. Schiphol Airport and the train station of Hoofddorp are only a few minutes away by car or public transport. Public transport to and from RichPort Park Schiphol-Rijk is operated by ConneXXion and R-Net. At the entrance of de park (Fokkerweg/Kruisweg crossing), within close proximity to the offices situates the "connection Schiphol Zuid" where the busses have a frequency of every 7 minutes during rush hour, and every 15 minutes outside of rush hour. With the ConneXXion circle line 180/181, the R-Net bus line 340 and the regular bus line the entire region of Schiphol, Amsterdam and Hoofddorp will be available. For detailed information, go to connexion.nl.

Surface area

Penthouse of approx. 324 sq m (5th floor) with a private roof terrace.

Parking

To the offered space belong 6 parking spaces (divided over the parking garage and the parking deck). At the entrance of the building there are reserved places for visitors.

State of delivery

The building/office space features include:

- very representative entrance with a natural stone floor, seating and plants;
- shower on the ground floor;
- two spacious elevators;
- mechanical ventilation with peak cooling;
- new modern sanitary facilities on each floor;
- windows that open;
- access control system;
- PVC floor;
- several separate offices, the rest is open floor plan;
- well equipped kitchen with appliances.

The building is provided with energy label B.

Rental price

The rental price for the office space is € 150 per sq m per year excluding VAT and service charges.

The rental price for the parking places is € 995 per place per year excluding VAT.

Lessor and lessee explicitly declare that in determining the rent, the rent level is based on the starting point that lessee will permanently utilise a minimum percentage as determined by law (or at a later stage to be determined) of the leased space for purposes giving right to VAT deductions, so that taxed rent may be opted for.

Service charges

The service charges are € 67.50 per sq m per year excluding VAT based on an advance payment with a yearly settlement.

Acceptance

At short notice.

The office space can be (sub-) let for a short or a longer period.

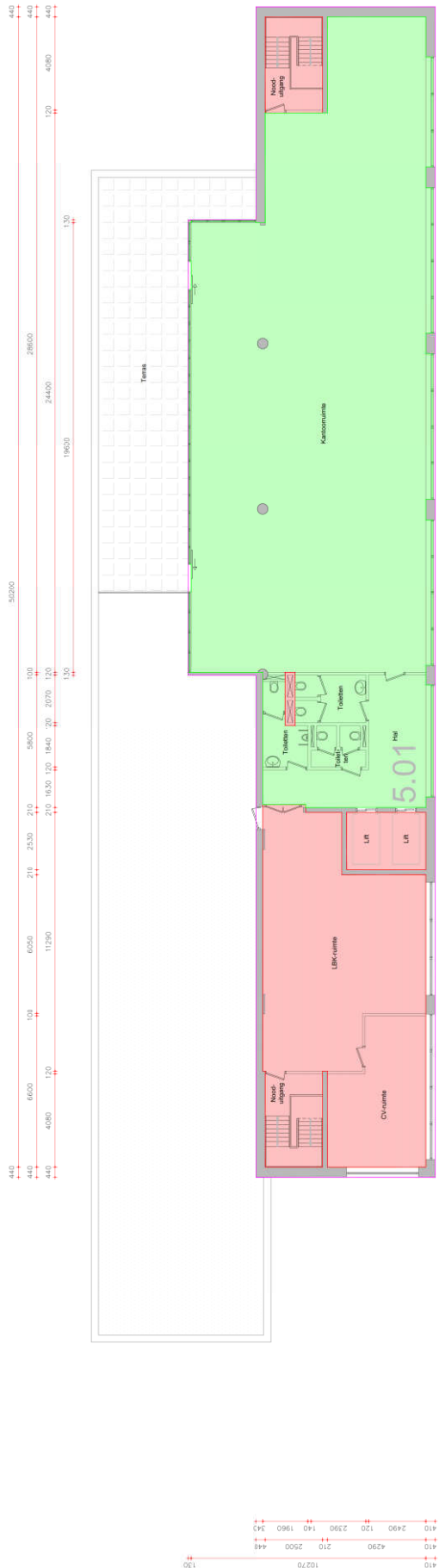
Although BT Makelaars takes due care in compiling all information provided, the accuracy of the content cannot be guaranteed and no rights or obligations can be derived from the information provided.











Removes

Dringende wanden (opgesteld op basis van de dikte van de wand)	Dringende wanden (opgesteld op basis van de dikte van de wand)
Wand opgesteld op basis van de dikte van de wand	Wand opgesteld op basis van de dikte van de wand
VVO Belegplaat	VVO Belegplaat
VVO Algemeen ruimt, gebouw niveau	VVO Algemeen ruimt, gebouw niveau
VVO Algemeen ruimt, bouwlaag niveau	VVO Algemeen ruimt, bouwlaag niveau
Uitgang van VVO	Uitgang van VVO

OMGEBING | Universitei BVO en VVO complex, Beechavenue 30-50, Schiphol-Rijk

OPDRACHTGEVER | Magnus Jansz

VERBODING | Sc-waardering

SCHAAL | 1:100

FORMAT | A1

DATUM | 10-02-2020

WETGEVER |

EN VERBODEN

Wet van 1997, Wet van 2002, Wet van 2003, Wet van 2004, Wet van 2005, Wet van 2006, Wet van 2007, Wet van 2008, Wet van 2009, Wet van 2010, Wet van 2011, Wet van 2012, Wet van 2013, Wet van 2014, Wet van 2015, Wet van 2016, Wet van 2017, Wet van 2018, Wet van 2019, Wet van 2020

EN VERBODEN

Wet van 1997, Wet van 2002, Wet van 2003, Wet van 2004, Wet van 2005, Wet van 2006, Wet van 2007, Wet van 2008, Wet van 2009, Wet van 2010, Wet van 2011, Wet van 2012, Wet van 2013, Wet van 2014, Wet van 2015, Wet van 2016, Wet van 2017, Wet van 2018, Wet van 2019, Wet van 2020

EN VERBODEN