



Project Information

Prestwickweg

Prestwickweg 8
Schiphol

To let

Office space at business park Schiphol Zuidoost in Schiphol

Prestwickweg 8, Schiphol

Project description

Two functional turn-key office floors of approx. 240 sq m and 280 sq m with private facilities in a small-scale office building, part of a logistic complex.

The complex has a fully fenced outdoor area and consists of six separate office buildings with a logistic space in the center.

The two office floors are offered for sublease.

Location

Schiphol Zuidoost business park is located in Schiphol's airport area, south of Schiphol Centre. It is separated from Schiphol-Centre by the Kaagbaan runway. The complex is easily accessible by car via the A4/A44 motorway (Amsterdam – The Hague – Rotterdam), A5 (Haarlem – Hoofddorp) and the A9 (Alkmaar – Amsterdam). The stop of bus line 191 is within walking distance.

Surface area

The 1st and 2nd floor are available:

1st floor approx. 281 sq m;

2nd floor approx. 242 sq m.

Parking

The building has a spacious outdoor area with an electrically operated gate for parking and loading/unloading. Tho the available space belong 5 parking places per floor.

State of delivery

The building / office space is equipped with, among other things:

- representative shared office entrance;
- elevator;
- mechanical ventilation with peak cooling;
- heating by means of radiators;
- cable ducts equipped with wall sockets;
- sanitary facilities and party per floor;
- windows that can be opened;
- suspended ceilings with lighting fixtures;
- partition walls and floor covering.

The building is provided with energy label A.

Rental price

The rental price is:

For the 1st floor: € 26,700 per year;

For the 2nd floor: € 27,800 per year;

including the 5 parking places per floor, excluding VAT and service charges.

Lessor and lessee explicitly declare that in determining the rent, the rent level is based on the starting point that Lessee will permanently utilise a minimum percentage as determined by law (or at a later stage to be determined) of the leased space for purposes giving right to VAT deductions, so that taxed rent may be opted for.

Service charges

The service charges are € 40,- per m² per year. This is a fixed, non-deductible advance payment and is indexed annually, simultaneously and in the same way as the rent.

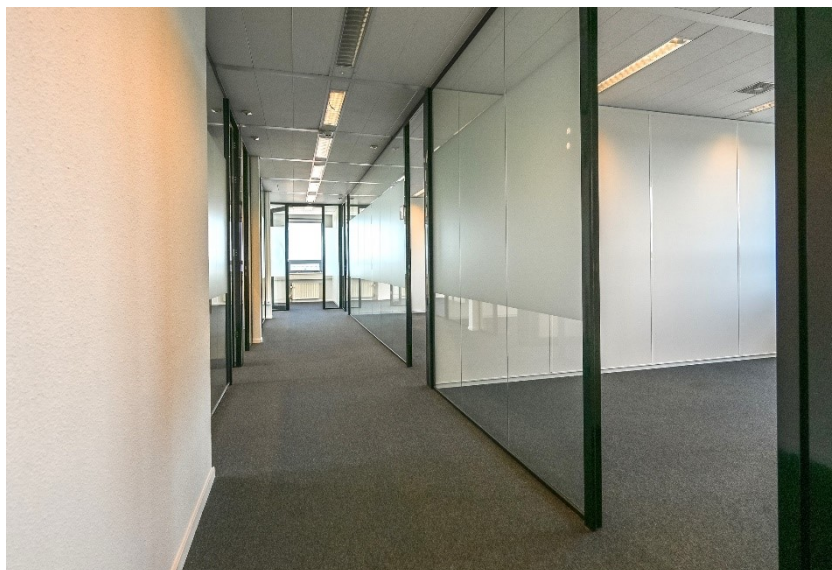
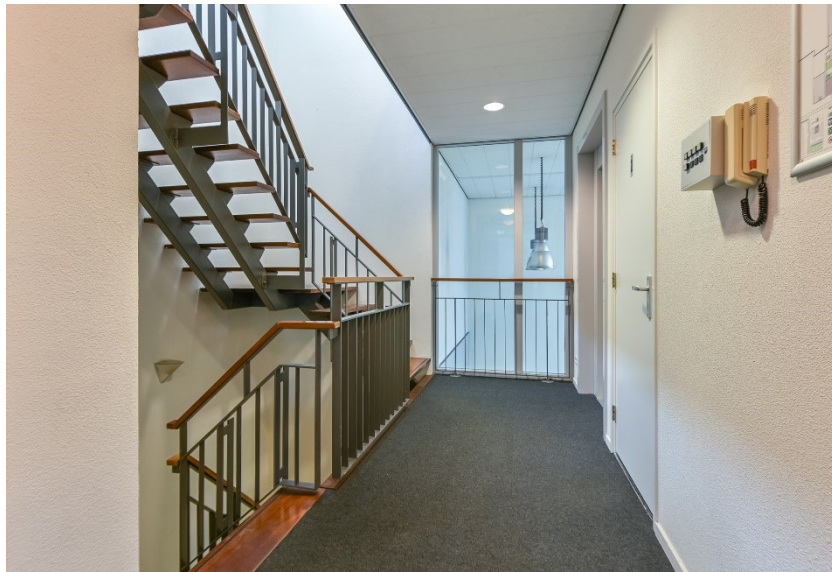
Acceptance

Immediately.

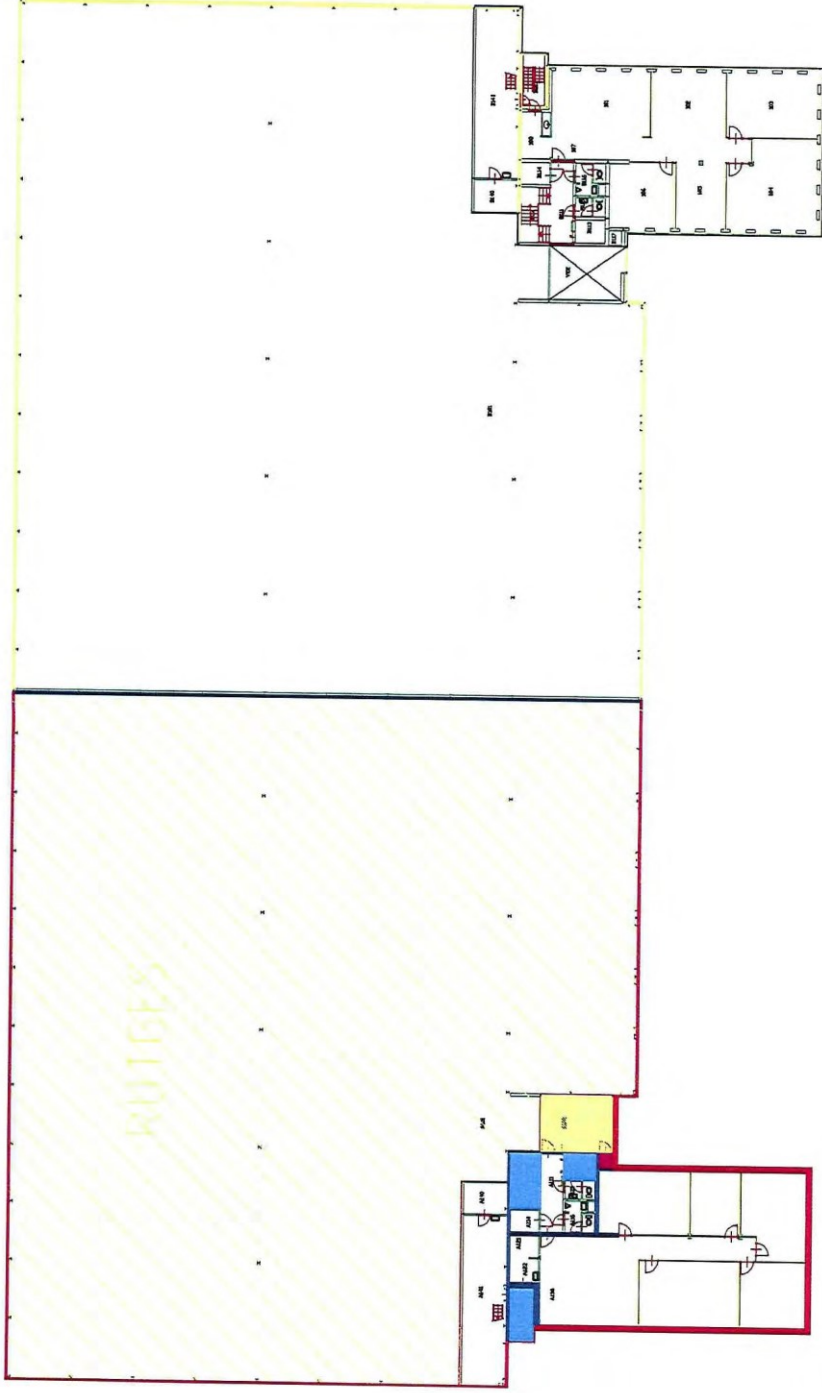
It concerns a sub-lease agreement.

Although BT Makelaars takes due care in compiling all information provided, the accuracy of the content cannot be guaranteed and no rights or obligations can be derived from the information provided.









Eerste verdieping



voor gebouwen en grounds		Houten	Rotterdam	Amsterdam
Opdrachtgever: Schiphol Real Estate bv		Werknummer 5221		
Project: Ruigjes te Schiphol 1e Verdieping				
Getekend:	R. Bestebroer	Wijziging a		
Datum:	07-06-2006	b		
Schaal:	autocad	c		
Formaat:	autocad	d		
Bestand:	NEN 2580	e		
		f		
		g		
		h		


Nen 2580

- █ GEVELCONSTRUCTIE
- █ STATISCHE BINNENWANDEN
- █ VERTIKAAL VERKEER
- █ INSTALLATIERUIMTE
- █ ISCHACHTEN
- █ PARKEREN of VIDE

Opdrachtgever: Schiphol Real Estate bv
 Architect: Adviseurs
 Schiedamschenweg 100, A
 1117 XG Amsterdam
 T: 020-6900887 - 020-6900887 - 020-6900887



Tweede verdieping


 Adviseurs voor gebouwen en gebiedsontwikkeling

Houten | Rotterdam | Amsterdam

Opmachtgever: Schiphol Real Estate bv
 Project: Ruilges te Schiphol
 2e Verdieping

Werknummer: 5221

Getekend:	R. Besteboer	Wijziging a	e
Datum:	07-06-2006	b	f
Schaal:	autocad	c	g
Formaat:	autocad	d	h
Beleed:	NEN 2580		

Gemeente Rotterdam - (2006) 06-11-2006 - (2006) 06-11-2006
 Gemeente Rotterdam - (2006) 06-11-2006 - (2006) 06-11-2006
 Gemeente Rotterdam - (2006) 06-11-2006 - (2006) 06-11-2006
 Gemeente Rotterdam - (2006) 06-11-2006 - (2006) 06-11-2006
 Gemeente Rotterdam - (2006) 06-11-2006 - (2006) 06-11-2006

- Nen 2580
- GEVELCONSTRUCTIE
 - STATISCHE BINNENWANDEN
 - STATISCHAL VERKEER
 - NUTTIGALTIJDERIEME
 - SCHAKELIEN
 - PARKEREN of VIDE